

Pace Searches and Arrest after Search

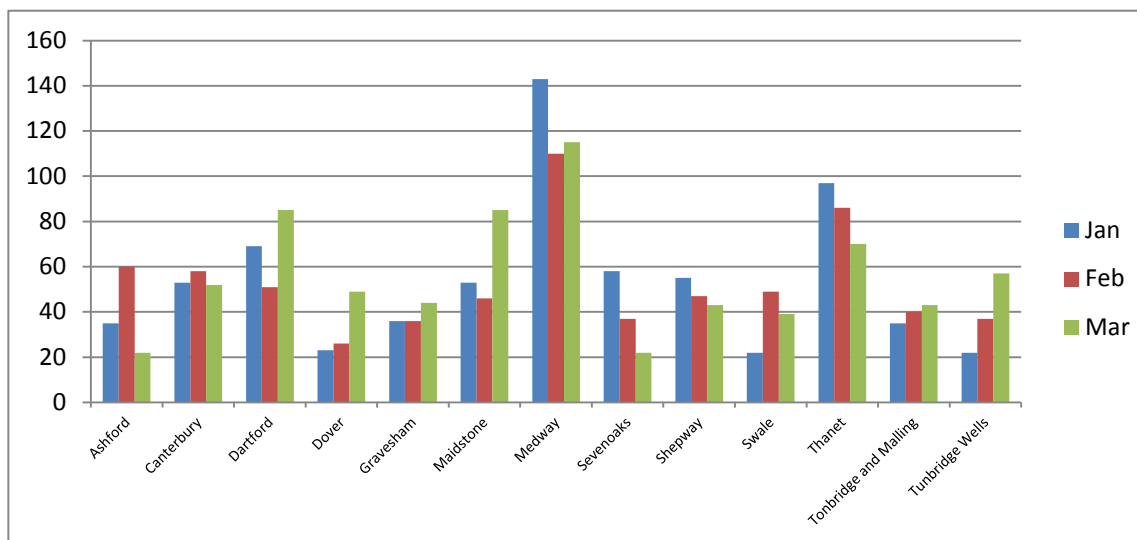
January- March 2016

Searches by district comparing the percentage of persons searched by ethnic code with the comparative data from the Census (2011) data

District	Total	White				Black				Asian				Mixed				Other Ethnic group			
		No.	% of Total	Census 2011 %	% diff	No.	% of Total	Census 2011 %	% diff	No.	% of Total	Census 2011 %	% diff	No.	% of Total	Census 2011 %	% diff	No.	% of Total	Census 2011 %	% diff
Ashford	117	84	71.8%	93.7%	-21.9%	16	13.7%	1.2%	+12.5%	4	3.4%	3.4%	+0.0%	8	6.8%	1.4%	+5.4%	5	4.3%	0.3%	+3.9%
Canterbury	163	126	77.3%	93.0%	-15.7%	21	12.9%	1.3%	+11.6%	4	2.5%	3.4%	-0.9%	8	4.9%	1.7%	+3.2%	4	2.5%	0.6%	+1.9%
Dartford	205	163	79.5%	87.4%	-7.9%	19	9.3%	3.7%	+5.6%	7	3.4%	6.0%	-2.5%	5	2.4%	2.2%	+0.2%	11	5.4%	0.8%	+4.6%
Dover	98	82	83.7%	96.7%	-13.0%	3	3.1%	0.3%	+2.7%	6	6.1%	1.8%	+4.3%	1	1.0%	0.9%	+0.1%	6	6.1%	0.2%	+5.9%
Gravesham	116	77	66.4%	82.8%	-16.4%	22	19.0%	2.8%	+16.1%	9	7.8%	10.4%	-2.7%	5	4.3%	2.0%	+2.3%	3	2.6%	1.9%	+0.7%
Maidstone	184	152	82.6%	94.1%	-11.5%	19	10.3%	0.9%	+9.4%	4	2.2%	3.2%	-1.0%	3	1.6%	1.5%	+0.1%	6	3.3%	0.3%	+3.0%
Medway	368	252	68.5%	89.6%	-21.2%	71	19.3%	2.5%	+16.8%	20	5.4%	5.2%	+0.3%	8	2.2%	2.0%	+0.2%	17	4.6%	0.7%	+3.9%
Sevenoaks	117	105	89.7%	95.8%	-6.0%	8	6.8%	0.7%	+6.1%		0.0%	1.8%	-1.8%	2	1.7%	1.5%	+0.3%	2	1.7%	0.2%	+1.5%
Shepway	145	101	69.7%	94.7%	-25.0%	13	9.0%	0.4%	+8.5%	23	15.9%	3.4%	+12.4%	5	3.4%	1.2%	+2.3%	3	2.1%	0.3%	+1.8%
Swale	110	100	90.9%	96.6%	-5.6%	5	4.5%	1.0%	+3.5%		0.0%	1.1%	-1.1%		0.0%	1.2%	-1.2%	5	4.5%	0.2%	+4.4%
Thanet	253	209	82.6%	95.5%	-12.9%	19	7.5%	0.7%	+6.8%	8	3.2%	1.9%	+1.3%	10	4.0%	1.6%	+2.3%	7	2.8%	0.3%	+2.5%
Tonbridge and Malling	118	100	84.7%	95.9%	-11.2%	11	9.3%	0.3%	+9.0%	1	0.8%	2.0%	-1.2%	1	0.8%	1.4%	-0.5%	5	4.2%	0.3%	+3.9%
Tunbridge Wells	116	98	84.5%	94.9%	-10.5%	11	9.5%	0.6%	+8.9%	1	0.9%	2.5%	-1.7%	6	5.2%	1.6%	+3.5%	0	0.0%	0.3%	-0.3%
Total	2110	1649	78.2%	93.1%	-14.9%	238	11.3%	1.3%	+10.0%	87	4.1%	3.5%	+0.6%	62	2.9%	1.6%	+1.4%	74	3.5%	0.5%	+3.0%

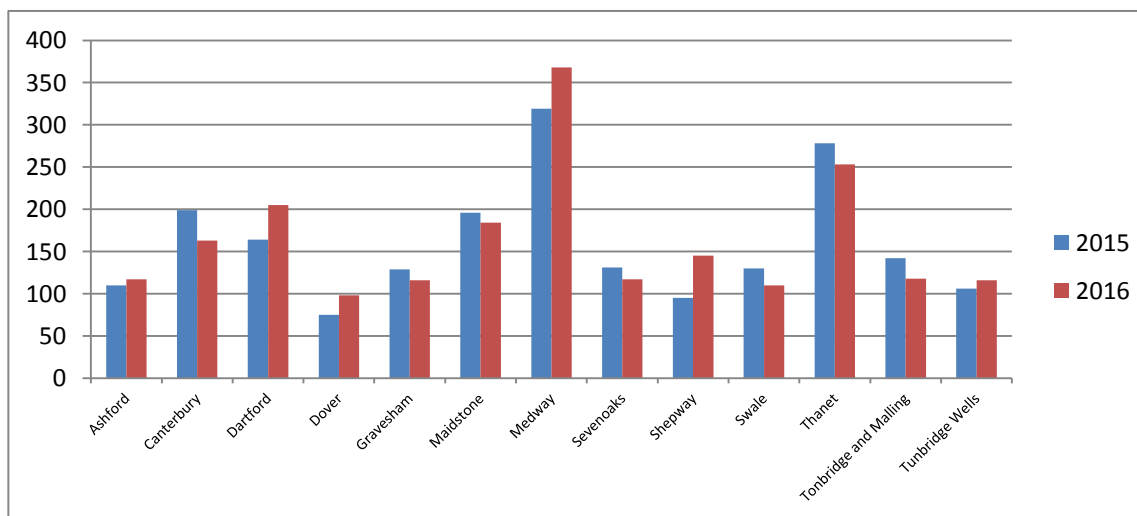
Searches - Monthly comparison January- March 2016

District	Jan	Feb	Mar	Total
Ashford	35	60	22	117
Canterbury	53	58	52	163
Dartford	69	51	85	205
Dover	23	26	49	98
Gravesham	36	36	44	116
Maidstone	53	46	85	184
Medway	143	110	115	368
Sevenoaks	58	37	22	117
Shepway	55	47	43	145
Swale	22	49	39	110
Thanet	97	86	70	253
Tonbridge and Malling	35	40	43	118
Tunbridge Wells	22	37	57	116
Total	701	683	726	2110



Searches – January- March 2015 compared to January- March 2016

District	2015	2016	% Diff
Ashford	110	117	+6.4%
Canterbury	199	163	-18.1%
Dartford	164	205	+25.0%
Dover	75	98	+30.7%
Gravesham	129	116	-10.1%
Maidstone	196	184	-6.1%
Medway	319	368	+15.4%
Sevenoaks	131	117	-10.7%
Shepway	95	145	+52.6%
Swale	130	110	-15.4%
Thanet	278	253	-9.0%
Tonbridge and Malling	142	118	-16.9%
Tunbridge Wells	106	116	+9.4%
Total	2074	2110	+1.7%



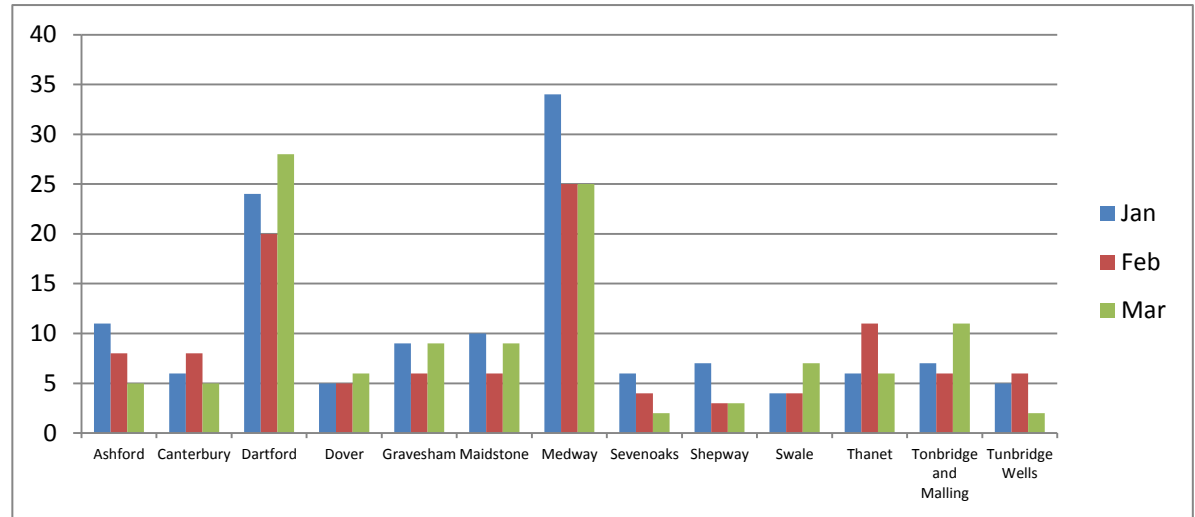
Arrests after Search

Arrests by district comparing the percentage of persons arrested by ethnic code with the comparative data from the Census (2011) data.

District	Total	White				Black				Asian				Mixed				Other Ethnic group			
		No.	% of Total	Census 2011 %	% diff	No.	% of Total	Census 2011 %	% diff	No.	% of Total	Census 2011 %	% diff	No.	% of Total	Census 2011 %	% diff	No.	% of Total	Census 2011 %	% diff
Ashford	24	17	70.8%	93.7%	-22.9%	5	20.8%	1.2%	+19.7%		0.0%	3.4%	-3.4%	1	4.2%	1.4%	+2.7%	1	4.2%	0.3%	+3.8%
Canterbury	19	14	73.7%	93.0%	-19.4%	3	15.8%	1.3%	+14.5%	1	5.3%	3.4%	+1.9%		0.0%	1.7%	-1.7%	1	5.3%	0.6%	+4.7%
Dartford	72	49	68.1%	87.4%	-19.3%	7	9.7%	3.7%	+6.0%	3	4.2%	6.0%	-1.8%	3	4.2%	2.2%	+1.9%	10	13.9%	0.8%	+13.1%
Dover	16	11	68.8%	96.7%	-27.9%	1	6.3%	0.3%	+5.9%	1	6.3%	1.8%	+4.4%	1	6.3%	0.9%	+5.3%	2	12.5%	0.2%	+12.3%
Gravesham	24	17	70.8%	82.8%	-12.0%	3	12.5%	2.8%	+9.7%	3	12.5%	10.4%	+2.1%	1	4.2%	2.0%	+2.1%	0	0.0%	1.9%	-1.9%
Maidstone	25	19	76.0%	94.1%	-18.1%	3	12.0%	0.9%	+11.1%	1	4.0%	3.2%	+0.8%		0.0%	1.5%	-1.5%	2	8.0%	0.3%	+7.7%
Medway	84	60	71.4%	89.6%	-18.2%	14	16.7%	2.5%	+14.1%	3	3.6%	5.2%	-1.6%	1	1.2%	2.0%	-0.8%	6	7.1%	0.7%	+6.4%
Sevenoaks	12	10	83.3%	95.8%	-12.4%	2	16.7%	0.7%	+15.9%		0.0%	1.8%	-1.8%		0.0%	1.5%	-1.5%	0	0.0%	0.2%	-0.2%
Shepway	13	11	84.6%	94.7%	-10.1%		0.0%	0.4%	-0.4%		0.0%	3.4%	-3.4%		0.0%	1.2%	-1.2%	2	15.4%	0.3%	+15.1%
Swale	15	13	86.7%	96.6%	-9.9%	1	6.7%	1.0%	+5.6%		0.0%	1.1%	-1.1%		0.0%	1.2%	-1.2%	1	6.7%	0.2%	+6.5%
Thanet	23	16	69.6%	95.5%	-26.0%	3	13.0%	0.7%	+12.4%	2	8.7%	1.9%	+6.8%	1	4.3%	1.6%	+2.7%	1	4.3%	0.3%	+4.1%
Tonbridge and Malling	24	14	58.3%	95.9%	-37.6%	5	20.8%	0.3%	+20.5%	1	4.2%	2.0%	+2.2%		0.0%	1.4%	-1.4%	4	16.7%	0.3%	+16.3%
Tunbridge Wells	13	9	69.2%	94.9%	-25.7%	2	15.4%	0.6%	+14.8%		0.0%	2.5%	-2.5%	2	15.4%	1.6%	+13.7%	0	0.0%	0.3%	-0.3%
Total	364	260	71.4%	93.1%	-21.6%	49	13.5%	1.3%	+12.1%	15	4.1%	3.5%	+0.6%	10	2.7%	1.6%	+1.2%	30	8.2%	0.5%	+7.7%

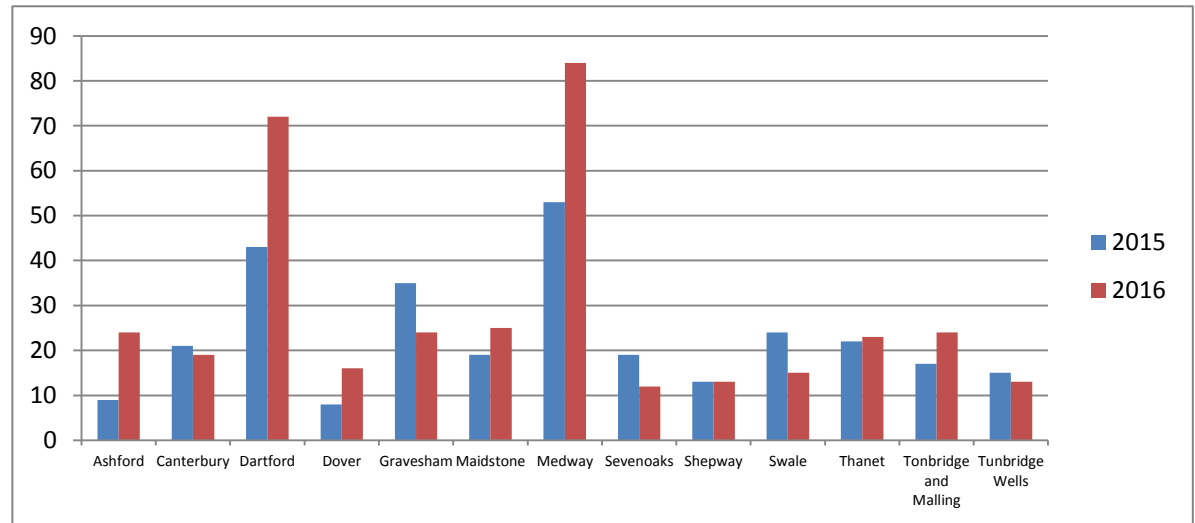
Arrests - Monthly comparison January-March 2016

District	Jan	Feb	Mar	Total
Ashford	11	8	5	24
Canterbury	6	8	5	19
Dartford	24	20	28	72
Dover	5	5	6	16
Gravesham	9	6	9	24
Maidstone	10	6	9	25
Medway	34	25	25	84
Sevenoaks	6	4	2	12
Shepway	7	3	3	13
Swale	4	4	7	15
Thanet	6	11	6	23
Tonbridge and Malling	7	6	11	24
Tunbridge Wells	5	6	2	13
Total	134	112	118	364



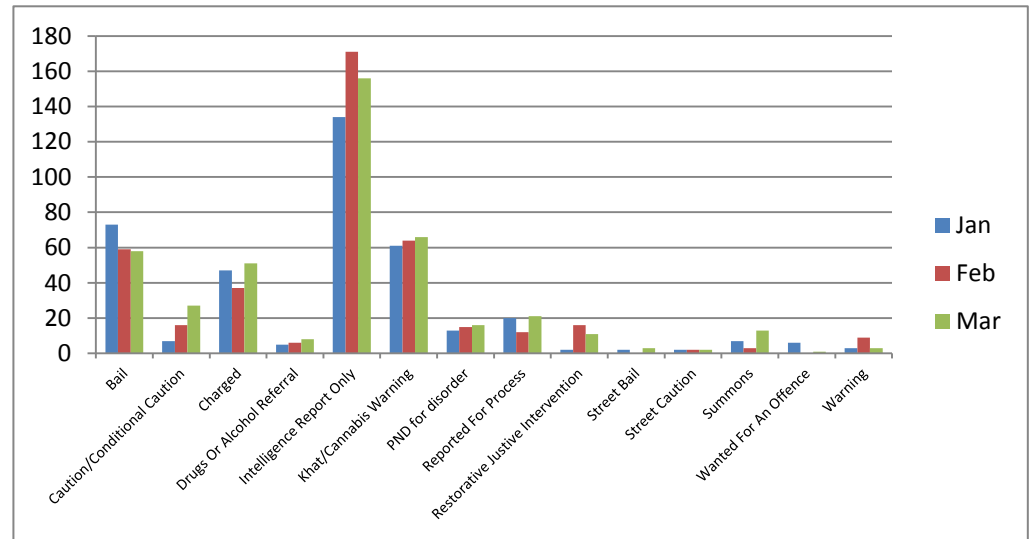
Arrests – January- March 2015 compared to January- March 2016

District	2015	2016	% Diff
Ashford	9	24	+166.7%
Canterbury	21	19	-9.5%
Dartford	43	72	+67.4%
Dover	8	16	+100.0%
Gravesham	35	24	-31.4%
Maidstone	19	25	+31.6%
Medway	53	84	+58.5%
Sevenoaks	19	12	-36.8%
Shepway	13	13	0.0%
Swale	24	15	-37.5%
Thanet	22	23	+4.5%
Tonbridge and Malling	17	24	+41.2%
Tunbridge Wells	15	13	-13.3%
Total	298	364	+22.1%



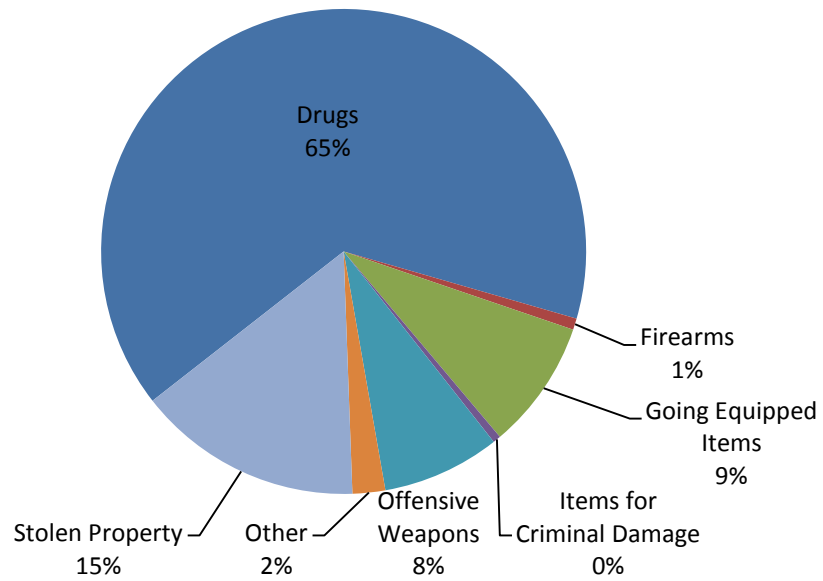
Outcomes- Monthly comparison January- March 2016

Outcome	Jan	Feb	Mar	Total
Bail	73	59	58	190
Caution/Conditional Caution	7	16	27	50
Charged	47	37	51	135
Drugs Or Alcohol Referral	5	6	8	19
Intelligence Report Only	134	171	156	461
Khat/Cannabis Warning	61	64	66	191
PND for disorder	13	15	16	44
Reported For Process	20	12	21	53
Restorative Justice Intervention	2	16	11	29
Street Bail	2	0	3	5
Street Caution	2	2	2	6
Summons	7	3	13	23
Wanted For An Offence	6	0	1	7
Warning	3	9	3	15
Total	382	410	436	1228



Reason for search and Arrest Category

Reason for Search



Reason for Arrest

