

Pace Searches and Arrest after Search

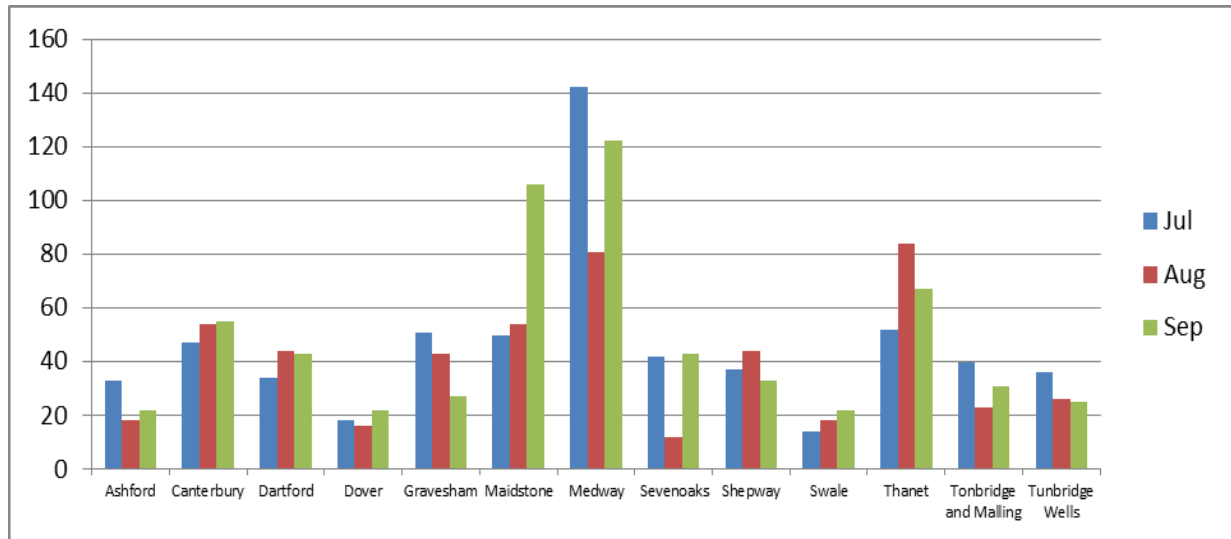
July- September 2016

Searches by district comparing the percentage of persons searched by ethnic code with the comparative data from the Census (2011) data

District	Total	White				Black				Asian				Mixed				Other Ethnic group			
		No.	% of Total	Census 2011 %	% diff	No.	% of Total	Census 2011 %	% diff	No.	% of Total	Census 2011 %	% diff	No.	% of Total	Census 2011 %	% diff	No.	% of Total	Census 2011 %	% diff
Ashford	73	50	68.5%	93.7%	-25.2%	10	13.7%	1.2%	+12.5%	9	12.3%	3.4%	+8.9%	1	1.4%	1.4%	-0.1%	3	4.1%	0.3%	+3.8%
Canterbury	156	100	64.1%	93.0%	-28.9%	37	23.7%	1.3%	+22.4%	9	5.8%	3.4%	+2.4%	2	1.3%	1.7%	-0.4%	8	5.1%	0.6%	+4.5%
Dartford	121	79	65.3%	87.4%	-22.1%	27	22.3%	3.7%	+18.6%	5	4.1%	6.0%	-1.8%	4	3.3%	2.2%	+1.1%	6	5.0%	0.8%	+4.2%
Dover	56	45	80.4%	96.7%	-16.3%	7	12.5%	0.3%	+12.2%	0	0.0%	1.8%	-1.8%	0	0.0%	0.9%	-0.9%	4	7.1%	0.2%	+6.9%
Gravesham	121	79	65.3%	82.8%	-17.5%	18	14.9%	2.8%	+12.0%	11	9.1%	10.4%	-1.3%	3	2.5%	2.0%	+0.4%	10	8.3%	1.9%	+6.4%
Maidstone	210	168	80.0%	94.1%	-14.1%	26	12.4%	0.9%	+11.5%	2	1.0%	3.2%	-2.2%	1	0.5%	1.5%	-1.0%	13	6.2%	0.3%	+5.9%
Medway	345	225	65.2%	89.6%	-24.4%	78	22.6%	2.5%	+20.1%	19	5.5%	5.2%	+0.3%	8	2.3%	2.0%	+0.4%	15	4.3%	0.7%	+3.6%
Sevenoaks	97	90	92.8%	95.8%	-3.0%	4	4.1%	0.7%	+3.4%	1	1.0%	1.8%	-0.8%	0	0.0%	1.5%	-1.5%	2	2.1%	0.2%	+1.8%
Shepway	114	88	77.2%	94.7%	-17.5%	5	4.4%	0.4%	+4.0%	13	11.4%	3.4%	+8.0%	1	0.9%	1.2%	-0.3%	7	6.1%	0.3%	+5.8%
Swale	54	42	77.8%	96.6%	-18.8%	6	11.1%	1.0%	+10.1%	2	3.7%	1.1%	+2.6%	1	1.9%	1.2%	+0.7%	3	5.6%	0.2%	+5.4%
Thanet	203	159	78.3%	95.5%	-17.2%	29	14.3%	0.7%	+13.6%	2	1.0%	1.9%	-0.9%	4	2.0%	1.6%	+0.3%	9	4.4%	0.3%	+4.1%
Tonbridge and Malling	94	74	78.7%	95.9%	-17.2%	5	5.3%	0.3%	+5.0%	7	7.4%	2.0%	+5.4%	5	5.3%	1.4%	+3.9%	3	3.2%	0.3%	+2.9%
Tunbridge Wells	87	70	80.5%	94.9%	-14.5%	5	5.7%	0.6%	+5.2%	1	1.1%	2.5%	-1.4%	8	9.2%	1.6%	+7.6%	3	3.4%	0.3%	+3.1%
Total	1731	1269	73.3%	93.1%	-19.7%	257	14.8%	1.3%	+13.5%	81	4.7%	3.5%	+1.1%	38	2.2%	1.6%	+0.6%	86	5.0%	0.5%	+4.5%

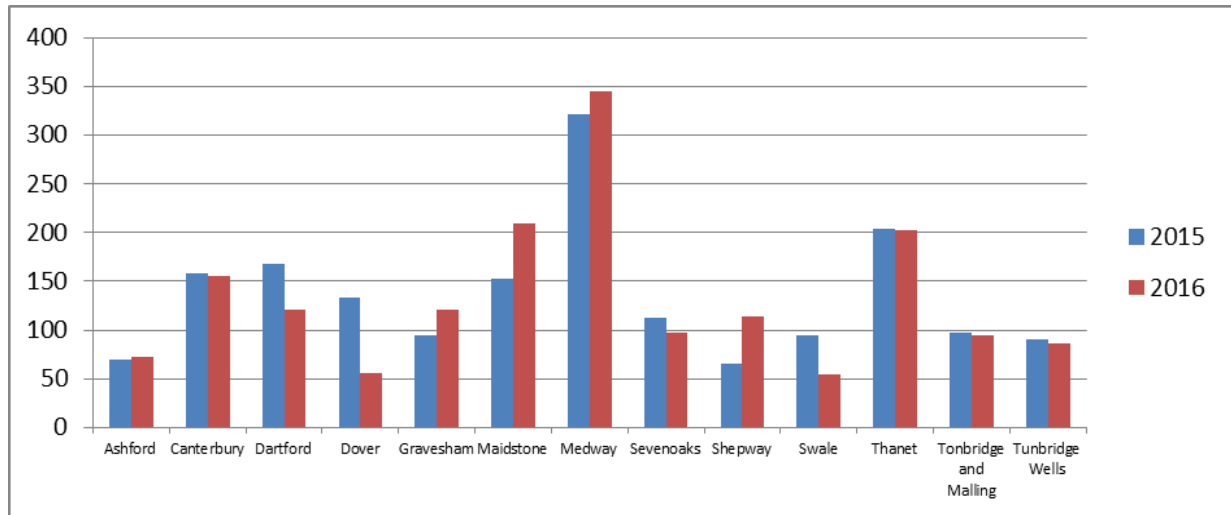
Searches - Monthly comparison July- September 2016

District	Jul	Aug	Sep	Total
Ashford	33	18	22	73
Canterbury	47	54	55	156
Dartford	34	44	43	121
Dover	18	16	22	56
Gravesham	51	43	27	121
Maidstone	50	54	106	210
Medway	142	81	122	345
Sevenoaks	42	12	43	97
Shepway	37	44	33	114
Swale	14	18	22	54
Thanet	52	84	67	203
Tonbridge and Malling	40	23	31	94
Tunbridge Wells	36	26	25	87
Total	596	517	618	1731



Searches – July- September 2015 compared to July- September 2016

District	2015	2016	% Diff
Ashford	70	73	+4.3%
Canterbury	158	156	-1.3%
Dartford	168	121	-28.0%
Dover	134	56	-58.2%
Gravesham	95	121	+27.4%
Maidstone	152	210	+38.2%
Medway	322	345	+7.1%
Sevenoaks	113	97	-14.2%
Shepway	66	114	+72.7%
Swale	95	54	-43.2%
Thanet	204	203	-0.5%
Tonbridge and Malling	97	94	-3.1%
Tunbridge Wells	91	87	-4.4%
Total	1765	1731	-1.9%



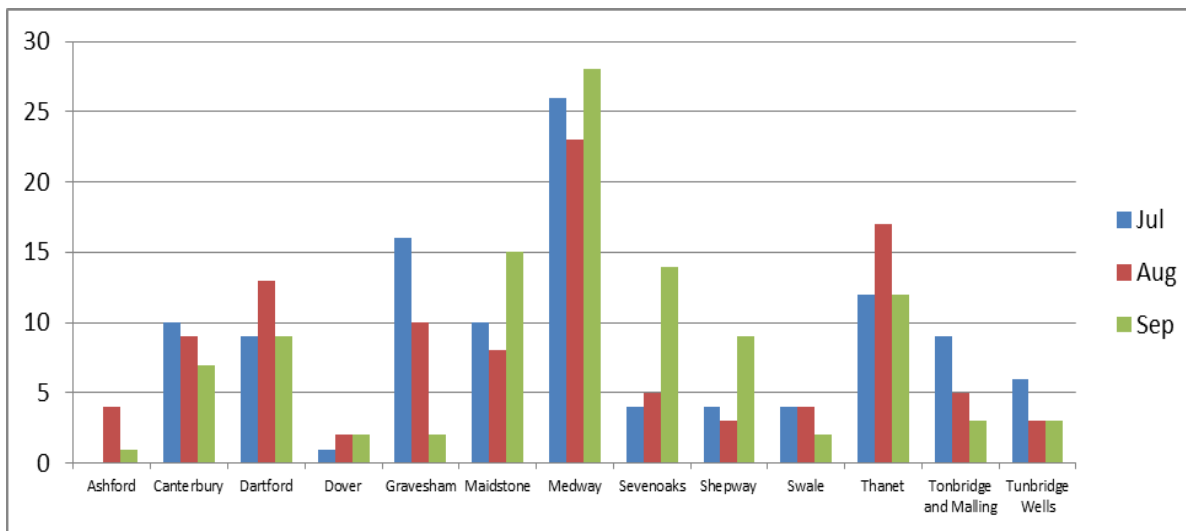
Arrests after Search

Arrests by district comparing the percentage of persons arrested by ethnic code with the comparative data from the Census (2011) data.

District	Total	White				Black				Asian				Mixed				Other Ethnic group			
		No.	% of Total	Census 2011 %	% diff	No.	% of Total	Census 2011 %	% diff	No.	% of Total	Census 2011 %	% diff	No.	% of Total	Census 2011 %	% diff	No.	% of Total	Census 2011 %	% diff
Ashford	5	3	60.0%	93.7%	-33.7%	1	20.0%	1.2%	+18.8%	0	0.0%	12.3%	-12.3%	1	20.0%	1.4%	+18.6%	0	0.0%	0.3%	-0.3%
Canterbury	26	13	50.0%	93.0%	-43.0%	9	34.6%	1.3%	+33.3%	1	3.8%	5.8%	-1.9%	0	0.0%	1.7%	-1.7%	3	11.5%	0.6%	+10.9%
Dartford	31	21	67.7%	87.4%	-19.6%	7	22.6%	3.7%	+18.9%	0	0.0%	4.1%	-4.1%	1	3.2%	2.2%	+1.0%	2	6.5%	0.8%	+5.7%
Dover	5	4	80.0%	96.7%	-16.7%	0	0.0%	0.3%	-0.3%	0	0.0%	0.0%	0.0%	0	0.0%	0.9%	-0.9%	1	20.0%	0.2%	+19.8%
Gravesham	28	20	71.4%	82.8%	-11.4%	3	10.7%	2.8%	+7.9%	1	3.6%	9.1%	-5.5%	2	7.1%	2.0%	+5.1%	2	7.1%	1.9%	+5.2%
Maidstone	33	24	72.7%	94.1%	-21.4%	6	18.2%	0.9%	+17.3%	0	0.0%	1.0%	-1.0%	0	0.0%	1.5%	-1.5%	3	9.1%	0.3%	+8.8%
Medway	77	52	67.5%	89.6%	-22.1%	15	19.5%	2.5%	+17.0%	3	3.9%	5.5%	-1.6%	1	1.3%	2.0%	-0.7%	6	7.8%	0.7%	+7.1%
Sevenoaks	23	19	82.6%	95.8%	-13.2%	4	17.4%	0.7%	+16.6%	0	0.0%	1.0%	-1.0%	0	0.0%	1.5%	-1.5%	0	0.0%	0.2%	-0.2%
Shepway	16	11	68.8%	94.7%	-25.9%	1	6.3%	0.4%	+5.8%	1	6.3%	11.4%	-5.2%	0	0.0%	1.2%	-1.2%	3	18.8%	0.3%	+18.4%
Swale	10	8	80.0%	96.6%	-16.6%	1	10.0%	1.0%	+9.0%	0	0.0%	3.7%	-3.7%	0	0.0%	1.2%	-1.2%	1	10.0%	0.2%	+9.8%
Thanet	41	31	75.6%	95.5%	-19.9%	7	17.1%	0.7%	+16.4%	0	0.0%	1.0%	-1.0%	1	2.4%	1.6%	+0.8%	2	4.9%	0.3%	+4.6%
Tonbridge and Malling	17	13	76.5%	95.9%	-19.4%	1	5.9%	0.3%	+5.5%	2	11.8%	7.4%	+4.3%	0	0.0%	1.4%	-1.4%	1	5.9%	0.3%	+5.5%
Tunbridge Wells	12	11	91.7%	94.9%	-3.3%	0	0.0%	0.6%	-0.6%	0	0.0%	1.1%	-1.1%	1	8.3%	1.6%	+6.7%	0	0.0%	0.3%	-0.3%
Total	324	230	71.0%	93.1%	-22.1%	55	17.0%	1.3%	+15.7%	8	2.5%	4.7%	-2.2%	7	2.2%	1.6%	+0.6%	24	7.4%	0.5%	+6.9%

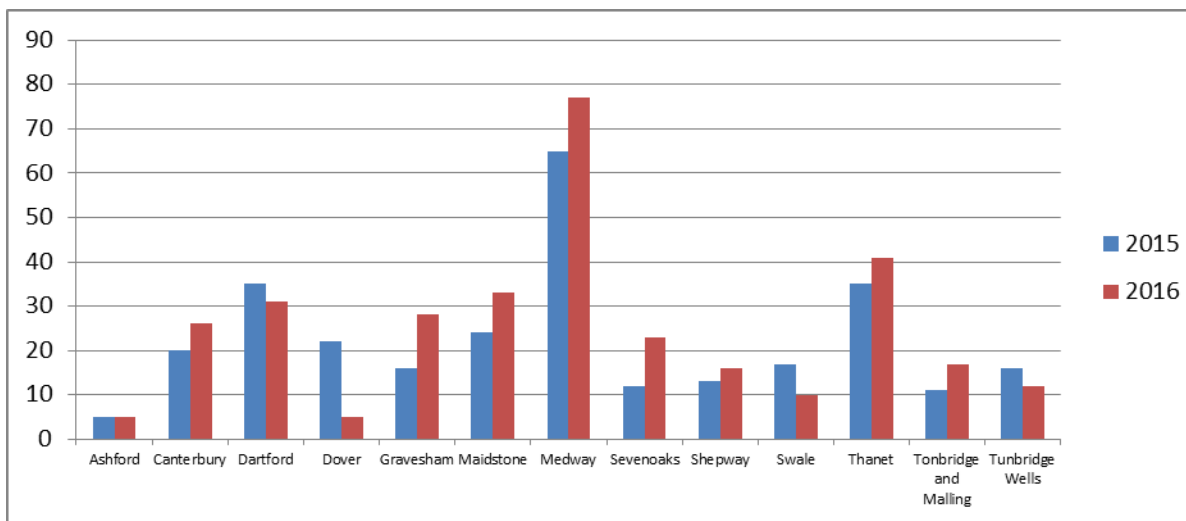
Arrests - Monthly comparison July- September 2016

District	Jul	Aug	Sep	Total
Ashford	0	4	1	5
Canterbury	10	9	7	26
Dartford	9	13	9	31
Dover	1	2	2	5
Gravesham	16	10	2	28
Maidstone	10	8	15	33
Medway	26	23	28	77
Sevenoaks	4	5	14	23
Shepway	4	3	9	16
Swale	4	4	2	10
Thanet	12	17	12	41
Tonbridge and Malling	9	5	3	17
Tunbridge Wells	6	3	3	12
Total	111	106	107	324



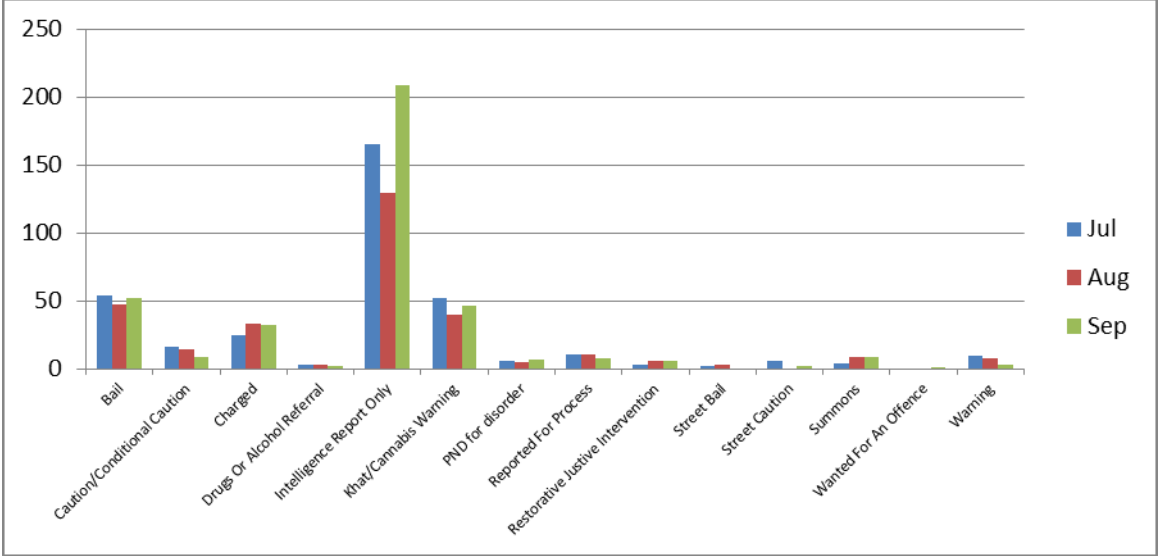
Arrests – July- September 2015 compared to July- September 2016

District	2015	2016	% Diff
Ashford	5	5	0.0%
Canterbury	20	26	+30.0%
Dartford	35	31	-11.4%
Dover	22	5	-77.3%
Gravesham	16	28	+75.0%
Maidstone	24	33	+37.5%
Medway	65	77	+18.5%
Sevenoaks	12	23	+91.7%
Shepway	13	16	+23.1%
Swale	17	10	-41.2%
Thanet	35	41	+17.1%
Tonbridge and Malling	11	17	+54.5%
Tunbridge Wells	16	12	-25.0%
Total	291	324	+11.3%



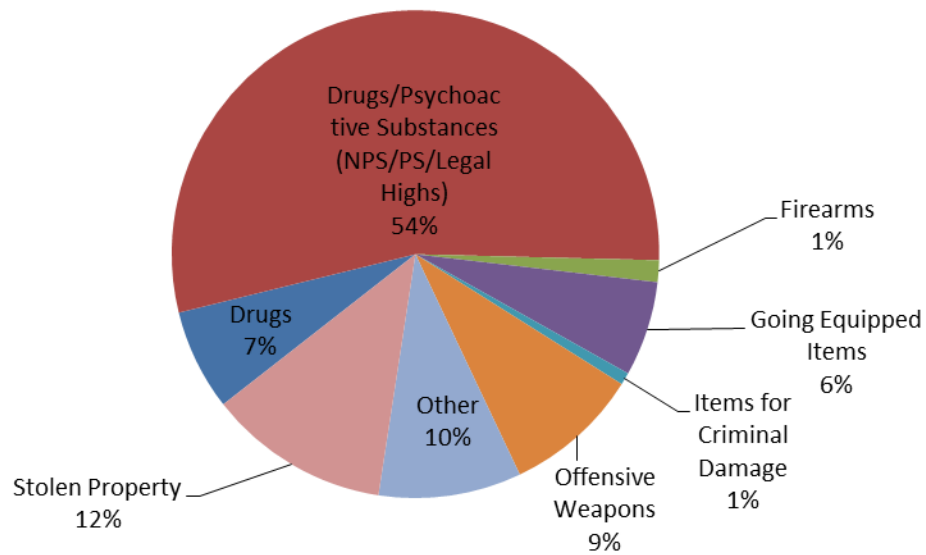
Outcomes- Monthly comparison July- September 2016

Outcome	Jul	Aug	Sep	Total
Bail	54	47	52	153
Caution/Conditional Caution	16	14	9	39
Charged	25	33	32	90
Drugs Or Alcohol Referral	3	3	2	8
Intelligence Report Only	165	129	209	503
Khat/Cannabis Warning	52	40	46	138
PND for disorder	6	5	7	18
Reported For Process	11	11	8	30
Restorative Justice Intervention	3	6	6	15
Street Bail	2	3	0	5
Street Caution	6	0	2	8
Summons	4	9	9	22
Wanted For An Offence	0	0	1	1
Warning	10	8	3	21
Total	357	308	386	1051



Reason for search and Arrest Category

Reason for Search



Reason for Arrest

