

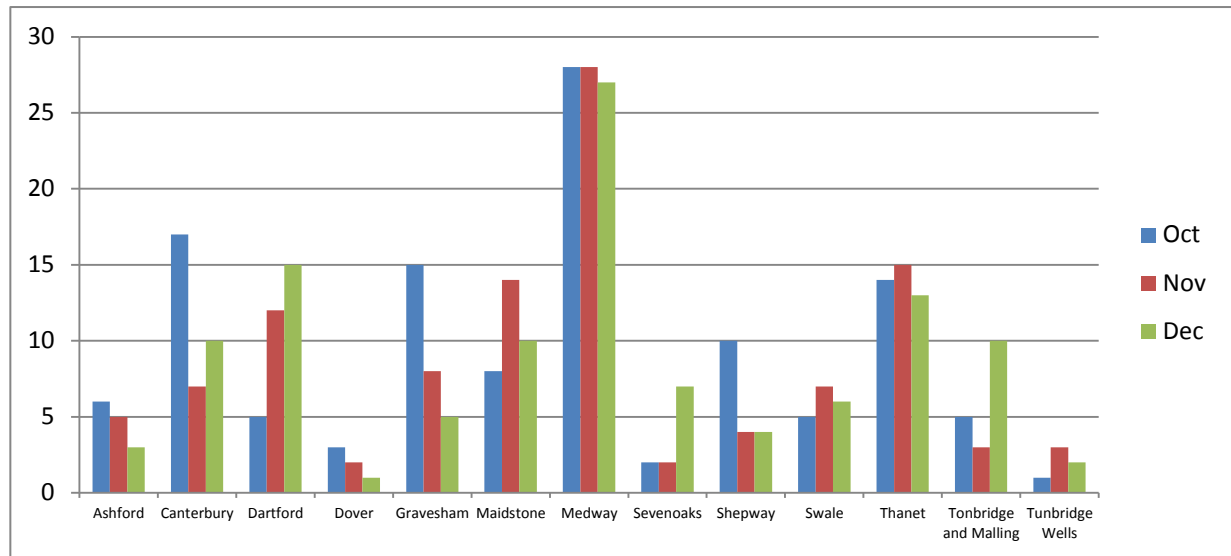
# Pace Searches and Arrest after Search October- December 2016

**Searches by district comparing the percentage of persons searched by ethnic code with the comparative data from the Census (2011) data**

Total	White				Black				Asian				Mixed				Other Ethnic group			
	No.	% of Total	Census 2011 %	% diff	No.	% of Total	Census 2011 %	% diff	No.	% of Total	Census 2011 %	% diff	No.	% of Total	Census 2011 %	% diff	No.	% of Total	Census 2011 %	% diff
94	75	79.8%	93.7%	-13.9%	5	5.3%	1.2%	+4.2%	7	7.4%	3.4%	+4.1%	4	4.3%	1.4%	+2.8%	3	3.2%	0.3%	+2.9%
181	136	75.1%	93.0%	-17.9%	27	14.9%	1.3%	+13.6%	5	2.8%	3.4%	-0.6%	5	2.8%	1.7%	+1.1%	8	4.4%	0.6%	+3.8%
146	98	67.1%	87.4%	-20.2%	15	10.3%	3.7%	+6.6%	16	11.0%	6.0%	+5.0%	6	4.1%	2.2%	+1.9%	11	7.5%	0.8%	+6.8%
72	67	93.1%	96.7%	-3.6%	0	0.0%	0.3%	-0.3%	3	4.2%	1.8%	+2.3%	0	0.0%	0.9%	-0.9%	2	2.8%	0.2%	+2.5%
118	79	66.9%	82.8%	-15.9%	18	15.3%	2.8%	+12.4%	14	11.9%	10.4%	+1.4%	6	5.1%	2.0%	+3.1%	1	0.8%	1.9%	-1.1%
218	166	76.1%	94.1%	-18.0%	31	14.2%	0.9%	+13.3%	5	2.3%	3.2%	-0.9%	10	4.6%	1.5%	+3.1%	6	2.8%	0.3%	+2.4%
368	245	66.6%	89.6%	-23.1%	88	23.9%	2.5%	+21.4%	16	4.3%	5.2%	-0.8%	7	1.9%	2.0%	-0.1%	12	3.3%	0.7%	+2.5%
80	66	82.5%	95.8%	-13.3%	8	10.0%	0.7%	+9.3%	1	1.3%	1.8%	-0.6%	3	3.8%	1.5%	+2.3%	2	2.5%	0.2%	+2.3%
128	92	71.9%	94.7%	-22.8%	9	7.0%	0.4%	+6.6%	5	3.9%	3.4%	+0.5%	2	1.6%	1.2%	+0.4%	20	15.6%	0.3%	+15.3%
76	71	93.4%	96.6%	-3.1%	2	2.6%	1.0%	+1.6%	1	1.3%	1.1%	+0.2%	0	0.0%	1.2%	-1.2%	2	2.6%	0.2%	+2.5%
257	202	78.6%	95.5%	-16.9%	30	11.7%	0.7%	+11.0%	10	3.9%	1.9%	+2.0%	4	1.6%	1.6%	-0.1%	11	4.3%	0.3%	+4.0%
123	103	83.7%	95.9%	-12.2%	13	10.6%	0.3%	+10.2%	0	0.0%	2.0%	-2.0%	1	0.8%	1.4%	-0.6%	6	4.9%	0.3%	+4.5%
82	75	91.5%	94.9%	-3.5%	2	2.4%	0.6%	+1.9%	2	2.4%	2.5%	-0.1%	2	2.4%	1.6%	+0.8%	1	1.2%	0.3%	+0.9%
1943	1475	75.9%	93.1%	-17.1%	248	12.8%	1.3%	+11.4%	85	4.4%	3.5%	+0.8%	50	2.6%	1.6%	+1.0%	85	4.4%	0.5%	+3.9%

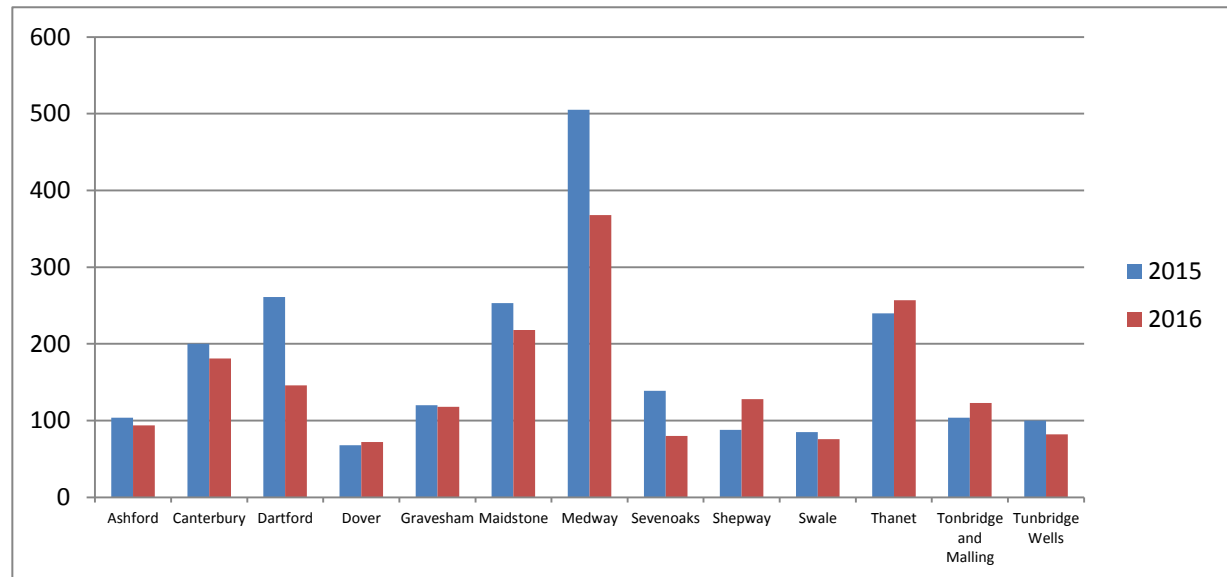
## Searches - Monthly comparison    October- December 2016

District	Oct	Nov	Dec	Total
Ashford	6	5	3	14
Canterbury	17	7	10	34
Dartford	5	12	15	32
Dover	3	2	1	6
Gravesham	15	8	5	28
Maidstone	8	14	10	32
Medway	28	28	27	83
Sevenoaks	2	2	7	11
Shepway	10	4	4	18
Swale	5	7	6	18
Thanet	14	15	13	42
Tonbridge and Malling	5	3	10	18
Tunbridge Wells	1	3	2	6
<b>Total</b>	<b>119</b>	<b>110</b>	<b>113</b>	<b>342</b>



## Searches – October- December 2015 compared to October- December 2016

District	2015	2016	% Diff
Ashford	104	94	-9.6%
Canterbury	200	181	-9.5%
Dartford	261	146	-44.1%
Dover	68	72	+5.9%
Gravesham	120	118	-1.7%
Maidstone	253	218	-13.8%
Medway	505	368	-27.1%
Sevenoaks	139	80	-42.4%
Shepway	88	128	+45.5%
Swale	85	76	-10.6%
Thanet	240	257	+7.1%
Tonbridge and Malling	104	123	+18.3%
Tunbridge Wells	100	82	-18.0%
<b>Total</b>	<b>2267</b>	<b>1943</b>	<b>-14.3%</b>



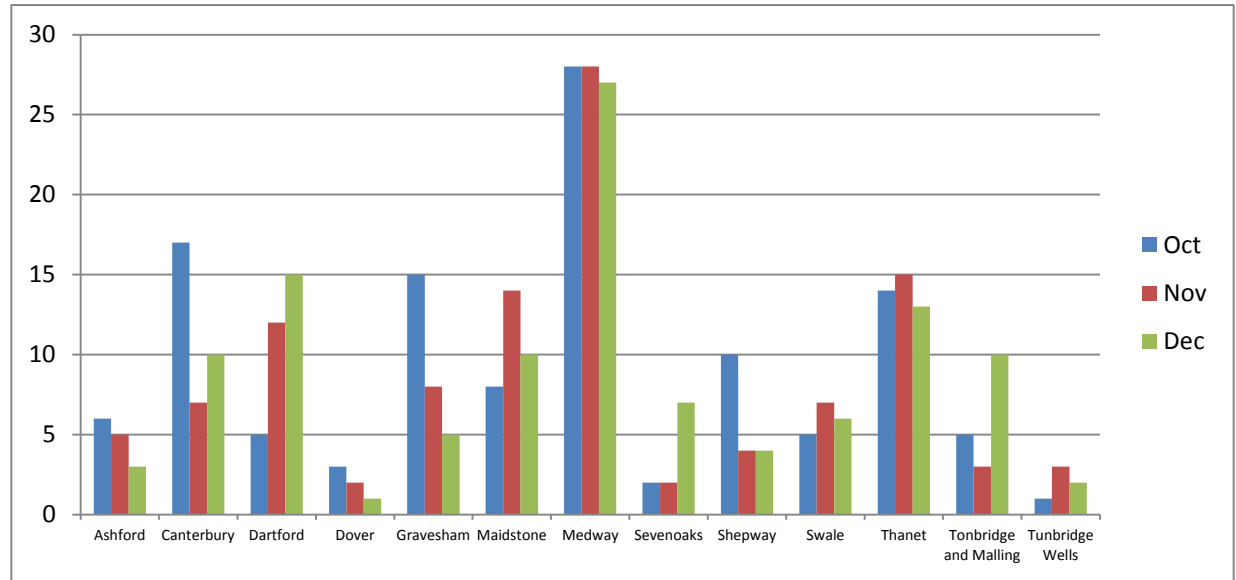
## Arrests after Search

**Arrests by district comparing the percentage of persons arrested by ethnic code with the comparative data from the Census (2011) data.**

District	Total	White				Black				Asian				Mixed				Other Ethnic group			
		No.	% of Total	Census 2011 %	% diff	No.	% of Total	Census 2011 %	% diff	No.	% of Total	Census 2011 %	% diff	No.	% of Total	Census 2011 %	% diff	No.	% of Total	Census 2011 %	% diff
Ashford	14	12	85.7%	93.7%	-8.0%	1	7.1%	1.2%	+6.0%	0	0.0%	7.4%	-7.4%	0	0.0%	1.4%	-1.4%	1	7.1%	0.3%	+6.8%
Canterbury	34	24	70.6%	93.0%	-22.4%	5	14.7%	1.3%	+13.4%	1	2.9%	2.8%	+0.2%	0	0.0%	1.7%	-1.7%	4	11.8%	0.6%	+11.2%
Dartford	32	17	53.1%	87.4%	-34.2%	4	12.5%	3.7%	+8.8%	3	9.4%	11.0%	-1.6%	1	3.1%	2.2%	+0.9%	7	21.9%	0.8%	+21.1%
Dover	6	6	100.0%	96.7%	+3.3%	0	0.0%	0.3%	-0.3%	0	0.0%	4.2%	-4.2%	0	0.0%	0.9%	-0.9%	0	0.0%	0.2%	-0.2%
Gravesham	28	16	57.1%	82.8%	-25.7%	7	25.0%	2.8%	+22.2%	3	10.7%	11.9%	-1.2%	2	7.1%	2.0%	+5.1%	0	0.0%	1.9%	-1.9%
Maidstone	32	28	87.5%	94.1%	-6.6%	2	6.3%	0.9%	+5.4%	0	0.0%	2.3%	-2.3%	1	3.1%	1.5%	+1.6%	1	3.1%	0.3%	+2.8%
Medway	83	55	66.3%	89.6%	-23.4%	22	26.5%	2.5%	+24.0%	1	1.2%	4.3%	-3.1%	0	0.0%	2.0%	-2.0%	5	6.0%	0.7%	+5.3%
Sevenoaks	11	9	81.8%	95.8%	-13.9%	0	0.0%	0.7%	-0.7%	0	0.0%	1.3%	-1.3%	1	9.1%	1.5%	+7.6%	1	9.1%	0.2%	+8.9%
Shepway	18	11	61.1%	94.7%	-33.6%	0	0.0%	0.4%	-0.4%	0	0.0%	3.9%	-3.9%	1	5.6%	1.2%	+4.4%	6	33.3%	0.3%	+33.0%
Swale	18	15	83.3%	96.6%	-13.2%	0	0.0%	1.0%	-1.0%	1	5.6%	1.3%	+4.2%	0	0.0%	1.2%	-1.2%	2	11.1%	0.2%	+10.9%
Thanet	42	30	71.4%	95.5%	-24.1%	6	14.3%	0.7%	+13.6%	1	2.4%	3.9%	-1.5%	0	0.0%	1.6%	-1.6%	5	11.9%	0.3%	+11.6%
Tonbridge and Malling	18	14	77.8%	95.9%	-18.1%	1	5.6%	0.3%	+5.2%	0	0.0%	0.0%	0.0%	0	0.0%	1.4%	-1.4%	3	16.7%	0.3%	+16.3%
Tunbridge Wells	6	6	100.0%	94.9%	+5.1%	0	0.0%	0.6%	-0.6%	0	0.0%	2.4%	-2.4%	0	0.0%	1.6%	-1.6%	0	0.0%	0.3%	-0.3%
<b>Total</b>	<b>342</b>	<b>243</b>	<b>71.1%</b>	<b>93.1%</b>	<b>-22.0%</b>	<b>48</b>	<b>14.0%</b>	<b>1.3%</b>	<b>+12.7%</b>	<b>10</b>	<b>2.9%</b>	<b>4.4%</b>	<b>-1.5%</b>	<b>6</b>	<b>1.8%</b>	<b>1.6%</b>	<b>+0.2%</b>	<b>35</b>	<b>10.2%</b>	<b>0.5%</b>	<b>+9.7%</b>

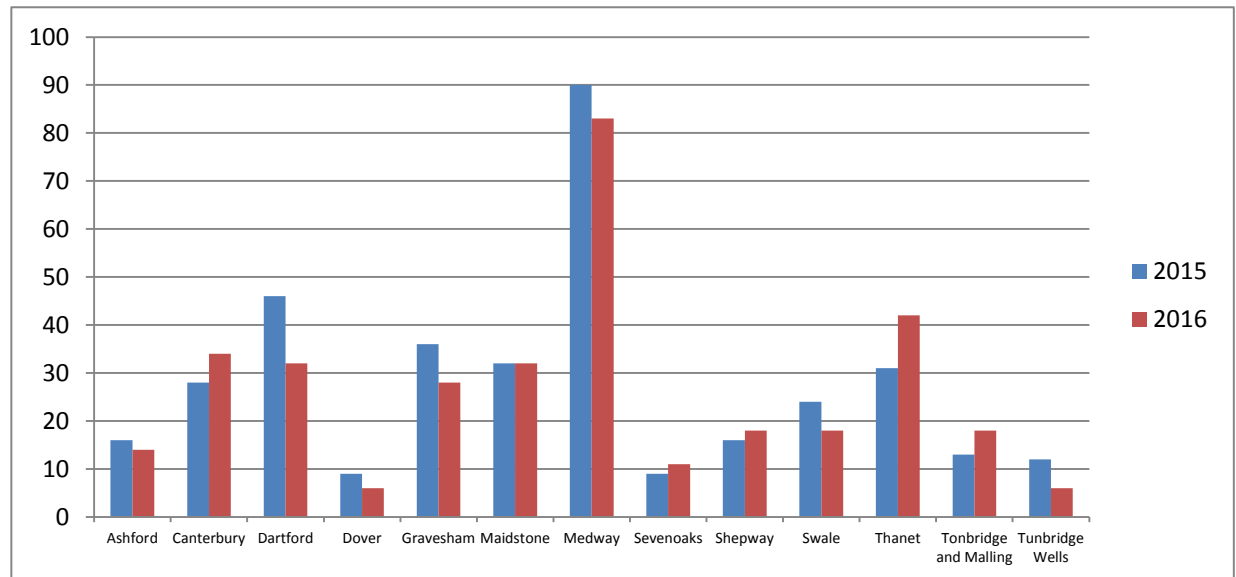
### Arrests - Monthly comparison October- December 2016

District	Oct	Nov	Dec	Total
Ashford	6	5	3	14
Canterbury	17	7	10	34
Dartford	5	12	15	32
Dover	3	2	1	6
Gravesham	15	8	5	28
Maidstone	8	14	10	32
Medway	28	28	27	83
Sevenoaks	2	2	7	11
Shepway	10	4	4	18
Swale	5	7	6	18
Thanet	14	15	13	42
Tonbridge and Malling	5	3	10	18
Tunbridge Wells	1	3	2	6
<b>Total</b>	<b>119</b>	<b>110</b>	<b>113</b>	<b>342</b>



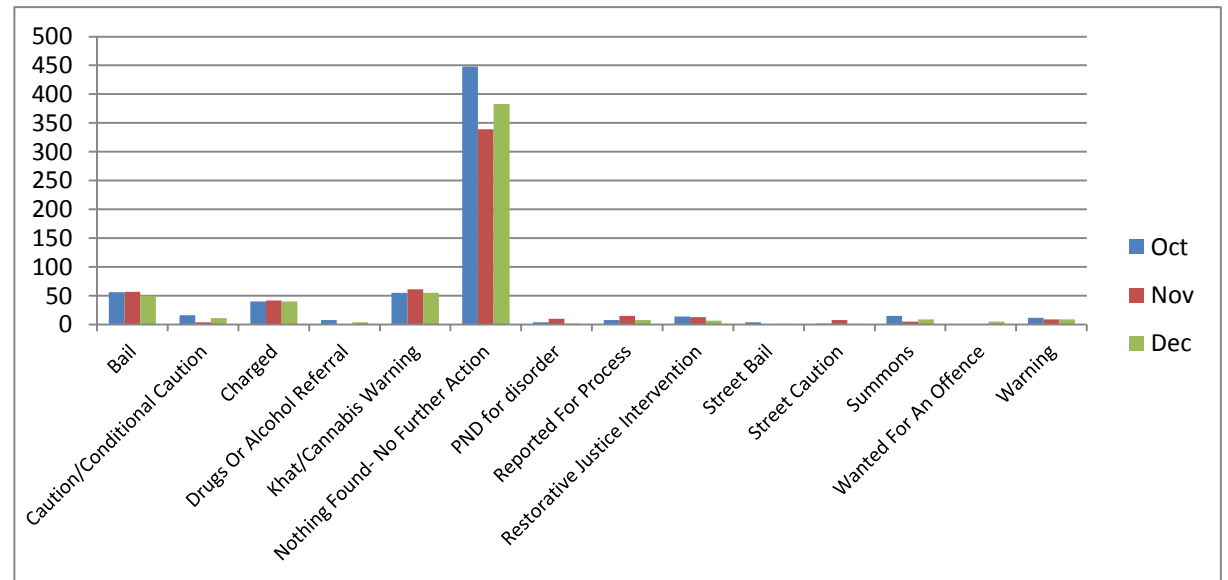
### Arrests – October- December 2015 compared to October- December 2016

District	2015	2016	% Diff
Ashford	16	14	-12.5%
Canterbury	28	34	+21.4%
Dartford	46	32	-30.4%
Dover	9	6	-33.3%
Gravesham	36	28	-22.2%
Maidstone	32	32	0.0%
Medway	90	83	-7.8%
Sevenoaks	9	11	+22.2%
Shepway	16	18	+12.5%
Swale	24	18	-25.0%
Thanet	31	42	+35.5%
Tonbridge and Malling	13	18	+38.5%
Tunbridge Wells	12	6	-50.0%
<b>Total</b>	<b>362</b>	<b>342</b>	<b>-5.5%</b>



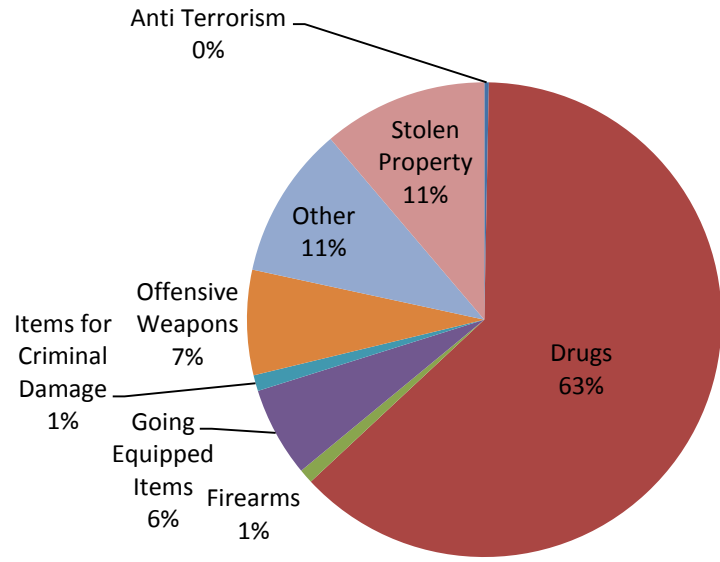
### Outcomes- Monthly comparison October- December 2016

Outcome	Oct	Nov	Dec	Total
Bail	56	57	50	163
Caution/Conditional Caution	16	4	11	31
Charged	40	42	40	122
Drugs Or Alcohol Referral	8	0	4	12
Khat/Cannabis Warning	55	61	55	171
Nothing Found- No Further Action	448	339	383	1170
PND for disorder	4	10	2	16
Reported For Process	8	15	8	31
Restorative Justice Intervention	14	13	7	34
Street Bail	4	0	1	5
Street Caution	2	8	1	11
Summons	15	5	9	29
Wanted For An Offence	0	0	5	5
Warning	12	9	9	30
<b>Total</b>	<b>682</b>	<b>563</b>	<b>585</b>	<b>1830</b>



## **Reason for search and Arrest Category**

### Reason for Search



### Reason for Arrest

