

Pace Searches and Arrest after Search

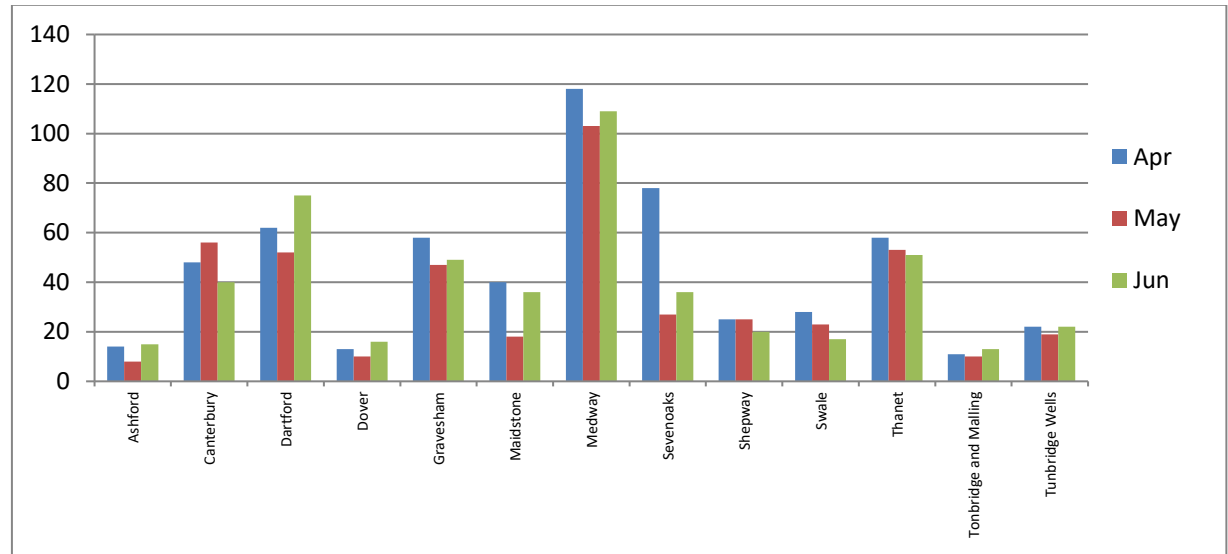
April – June 2018

Searches by district comparing the percentage of persons searched by ethnic code with the comparative data from the Census (2011) data

District	Total	White				Black				Asian				Mixed				Other Ethnic group			
		No.	% of Total	Census 2011 %	% diff	No.	% of Total	Census 2011 %	% diff	No.	% of Total	Census 2011 %	% diff	No.	% of Total	Census 2011 %	% diff	No.	% of Total	Census 2011 %	% diff
Ashford	37	27	73.0%	93.7%	-20.7%	3	8.1%	1.2%	+6.9%	4	10.8%	3.4%	+7.4%	1	2.7%	1.4%	+1.3%	2	5.4%	0.3%	+5.1%
Canterbury	144	86	59.7%	93.0%	-33.3%	32	22.2%	1.3%	+20.9%	9	6.3%	3.4%	+2.9%	2	1.4%	1.7%	-0.3%	15	10.4%	0.6%	+9.8%
Dartford	189	139	73.5%	87.4%	-13.8%	23	12.2%	3.7%	+8.5%	10	5.3%	6.0%	-0.7%	6	3.2%	2.2%	+1.0%	11	5.8%	0.8%	+5.0%
Dover	39	31	79.5%	96.7%	-17.2%	1	2.6%	0.3%	+2.2%	0	0.0%	1.8%	-1.8%	1	2.6%	0.9%	+1.6%	6	15.4%	0.2%	+15.2%
Gravesham	154	90	58.4%	82.8%	-24.4%	22	14.3%	2.8%	+11.4%	19	12.3%	10.4%	+1.9%	5	3.2%	2.0%	+1.2%	18	11.7%	1.9%	+9.8%
Maidstone	94	81	86.2%	94.1%	-7.9%	6	6.4%	0.9%	+5.5%	3	3.2%	3.2%	+0.0%	2	2.1%	1.5%	+0.6%	2	2.1%	0.3%	+1.8%
Medway	330	211	63.9%	89.6%	-25.7%	76	23.0%	2.5%	+20.5%	11	3.3%	5.2%	-1.8%	14	4.2%	2.0%	+2.3%	18	5.5%	0.7%	+4.7%
Sevenoaks	141	128	90.8%	95.8%	-5.0%	5	3.5%	0.7%	+2.8%	1	0.7%	1.8%	-1.1%	0	0.0%	1.5%	-1.5%	7	5.0%	0.2%	+4.7%
Shepway	70	50	71.4%	94.7%	-23.2%	7	10.0%	0.4%	+9.6%	5	7.1%	3.4%	+3.7%	2	2.9%	1.2%	+1.7%	6	8.6%	0.3%	+8.3%
Swale	68	57	83.8%	96.6%	-12.7%	9	13.2%	1.0%	+12.2%	0	0.0%	1.1%	-1.1%	0	0.0%	1.2%	-1.2%	2	2.9%	0.2%	+2.8%
Thanet	162	127	78.4%	95.5%	-17.1%	12	7.4%	0.7%	+6.7%	7	4.3%	1.9%	+2.5%	5	3.1%	1.6%	+1.5%	11	6.8%	0.3%	+6.5%
Tonbridge and Malling	34	30	88.2%	95.9%	-7.7%	0	0.0%	0.3%	-0.3%	2	5.9%	2.0%	+3.9%	1	2.9%	1.4%	+1.6%	1	2.9%	0.3%	+2.6%
Tunbridge Wells	63	53	84.1%	94.9%	-10.8%	3	4.8%	0.6%	+4.2%	2	3.2%	2.5%	+0.7%	2	3.2%	1.6%	+1.5%	3	4.8%	0.3%	+4.4%
Total	1525	1110	72.8%	93.1%	-20.3%	199	13.0%	1.3%	+11.7%	73	4.8%	3.5%	+1.2%	41	2.7%	1.6%	+1.1%	102	6.7%	0.5%	+6.2%

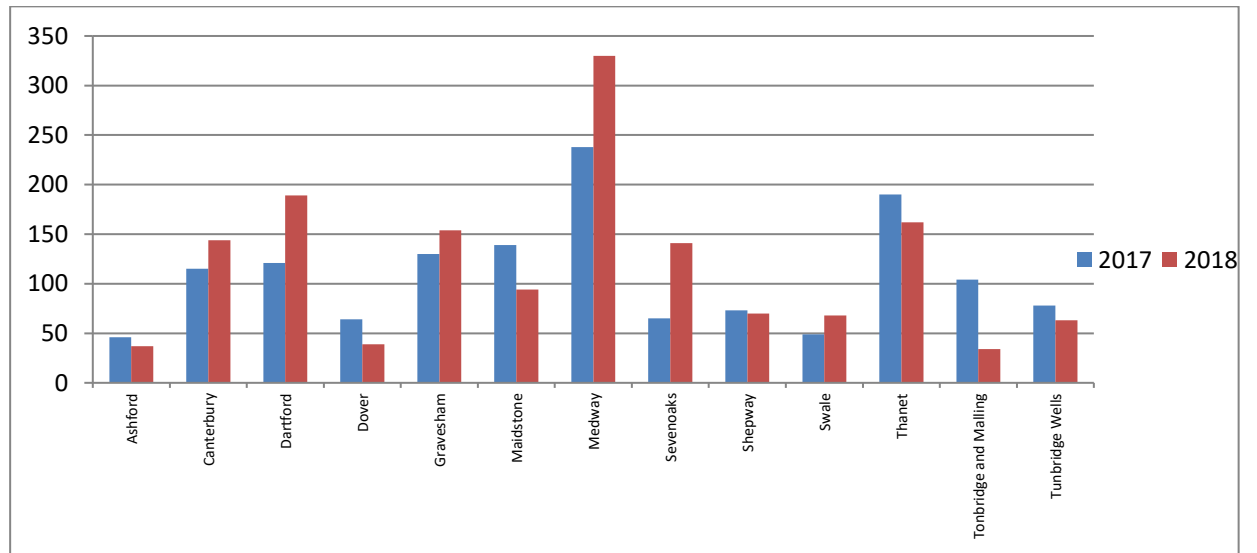
Searches - Monthly comparison April – June 2018

District	Apr	May	Jun	Total
Ashford	14	8	15	37
Canterbury	48	56	40	144
Dartford	62	52	75	189
Dover	13	10	16	39
Gravesham	58	47	49	154
Maidstone	40	18	36	94
Medway	118	103	109	330
Sevenoaks	78	27	36	141
Shepway	25	25	20	70
Swale	28	23	17	68
Thanet	58	53	51	162
Tonbridge and Malling	11	10	13	34
Tunbridge Wells	22	19	22	63
Total	575	451	499	1525



Searches – April – June 2017 compared to April – June 2018

District	2017	2018	% Diff
Ashford	46	37	-19.6%
Canterbury	115	144	+25.2%
Dartford	121	189	+56.2%
Dover	64	39	-39.1%
Gravesham	130	154	+18.5%
Maidstone	139	94	-32.4%
Medway	238	330	+38.7%
Sevenoaks	65	141	+116.9%
Shepway	73	70	-4.1%
Swale	49	68	+38.8%
Thanet	190	162	-14.7%
Tonbridge and Malling	104	34	-67.3%
Tunbridge Wells	78	63	-19.2%
Total	1412	1525	+8.0%



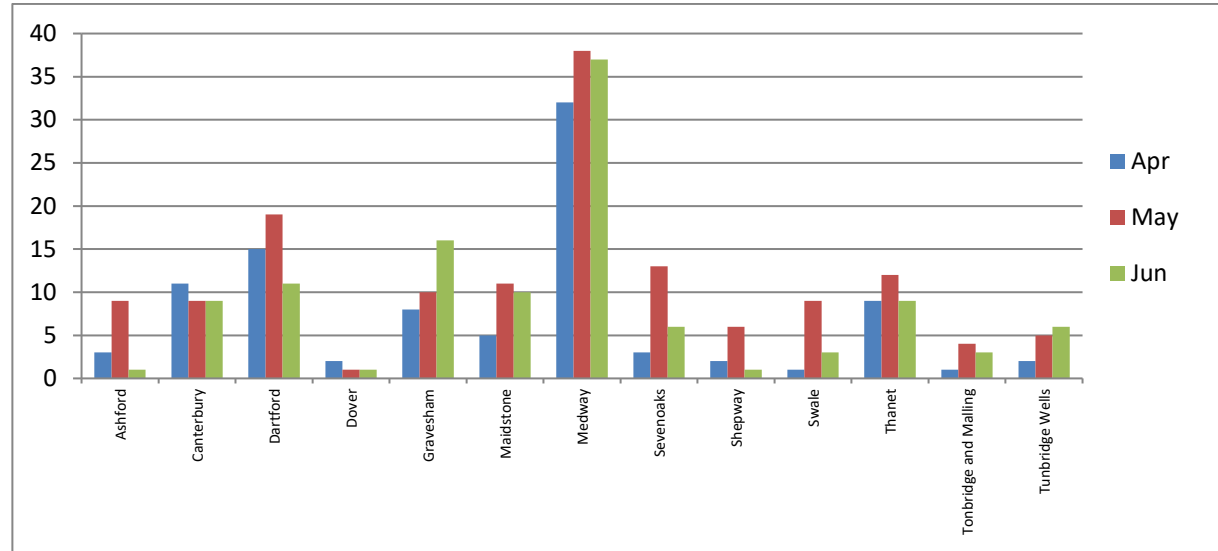
Arrests after Search

Arrests by district comparing the percentage of persons arrested by ethnic code with the comparative data from the Census (2011) data.

District	Total	White				Black				Asian				Mixed				Other Ethnic group			
		No.	% of Total	Census 2011 %	% diff	No.	% of Total	Census 2011 %	% diff	No.	% of Total	Census 2011 %	% diff	No.	% of Total	Census 2011 %	% diff	No.	% of Total	Census 2011 %	% diff
Ashford	13	11	84.6%	93.7%	-9.1%	2	15.4%	1.2%	+14.2%	0	0.0%	10.8%	-10.8%	0	0.0%	1.4%	-1.4%	0	0.0%	0.3%	-0.3%
Canterbury	29	17	58.6%	93.0%	-34.4%	5	17.2%	1.3%	+16.0%	3	10.3%	6.3%	+4.1%	0	0.0%	1.7%	-1.7%	4	13.8%	0.6%	+13.2%
Dartford	45	36	80.0%	87.4%	-7.4%	4	8.9%	3.7%	+5.2%	2	4.4%	5.3%	-0.8%	0	0.0%	2.2%	-2.2%	3	6.7%	0.8%	+5.9%
Dover	4	3	75.0%	96.7%	-21.7%	1	25.0%	0.3%	+24.7%	0	0.0%	0.0%	0.0%	0	0.0%	0.9%	-0.9%	0	0.0%	0.2%	-0.2%
Gravesham	34	18	52.9%	82.8%	-29.9%	5	14.7%	2.8%	+11.9%	5	14.7%	12.3%	+2.4%	0	0.0%	2.0%	-2.0%	6	17.6%	1.9%	+15.7%
Maidstone	26	19	73.1%	94.1%	-21.0%	2	7.7%	0.9%	+6.8%	2	7.7%	3.2%	+4.5%	0	0.0%	1.5%	-1.5%	3	11.5%	0.3%	+11.2%
Medway	107	70	65.4%	89.6%	-24.2%	28	26.2%	2.5%	+23.6%	3	2.8%	3.3%	-0.5%	5	4.7%	2.0%	+2.7%	1	0.9%	0.7%	+0.2%
Sevenoaks	22	18	81.8%	95.8%	-13.9%	1	4.5%	0.7%	+3.8%	0	0.0%	0.7%	-0.7%	1	4.5%	1.5%	+3.1%	2	9.1%	0.2%	+8.9%
Shepway	9	6	66.7%	94.7%	-28.0%	0	0.0%	0.4%	-0.4%	0	0.0%	7.1%	-7.1%	2	22.2%	1.2%	+21.0%	1	11.1%	0.3%	+10.8%
Swale	13	10	76.9%	96.6%	-19.6%	3	23.1%	1.0%	+22.0%	0	0.0%	0.0%	0.0%	0	0.0%	1.2%	-1.2%	0	0.0%	0.2%	-0.2%
Thanet	30	26	86.7%	95.5%	-8.9%	1	3.3%	0.7%	+2.7%	0	0.0%	4.3%	-4.3%	0	0.0%	1.6%	-1.6%	3	10.0%	0.3%	+9.7%
Tonbridge and Malling	8	7	87.5%	95.9%	-8.4%	0	0.0%	0.3%	-0.3%	1	12.5%	5.9%	+6.6%	0	0.0%	1.4%	-1.4%	0	0.0%	0.3%	-0.3%
Tunbridge Wells	13	12	92.3%	94.9%	-2.6%	0	0.0%	0.6%	-0.6%	0	0.0%	3.2%	-3.2%	1	7.7%	1.6%	+6.0%	0	0.0%	0.3%	-0.3%
Total	353	253	71.7%	93.1%	-21.4%	52	14.7%	1.3%	+13.4%	16	4.5%	4.8%	-0.3%	9	2.5%	1.6%	+1.0%	23	6.5%	0.5%	+6.0%

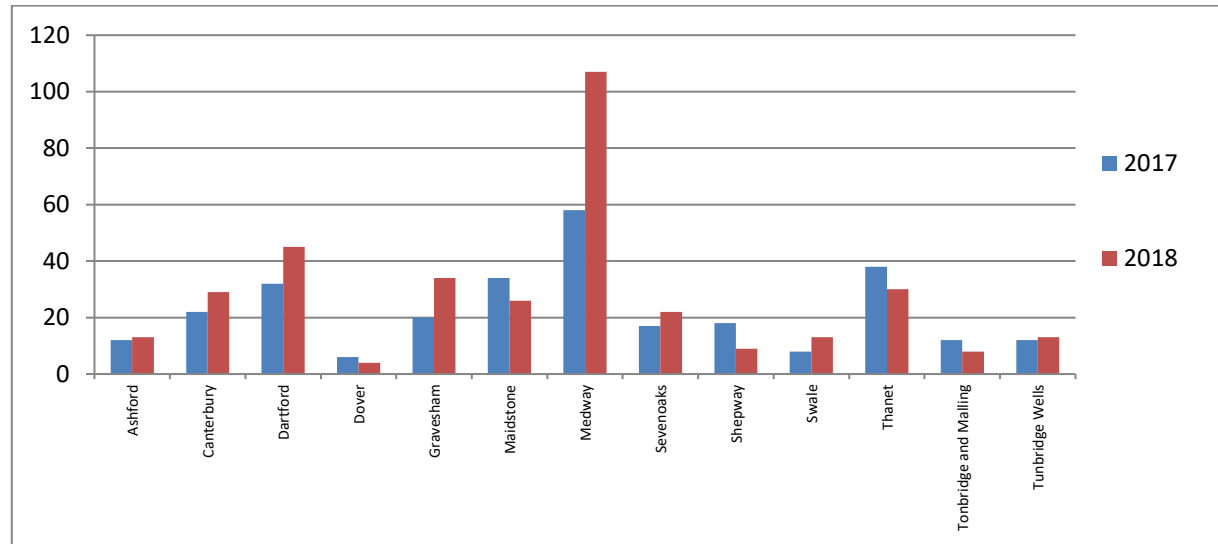
Arrests - Monthly comparison April – June 2018

District	Apr	May	Jun	Total
Ashford	3	9	1	13
Canterbury	11	9	9	29
Dartford	15	19	11	45
Dover	2	1	1	4
Gravesham	8	10	16	34
Maidstone	5	11	10	26
Medway	32	38	37	107
Sevenoaks	3	13	6	22
Shepway	2	6	1	9
Swale	1	9	3	13
Thanet	9	12	9	30
Tonbridge and Malling	1	4	3	8
Tunbridge Wells	2	5	6	13
Total	94	146	113	353



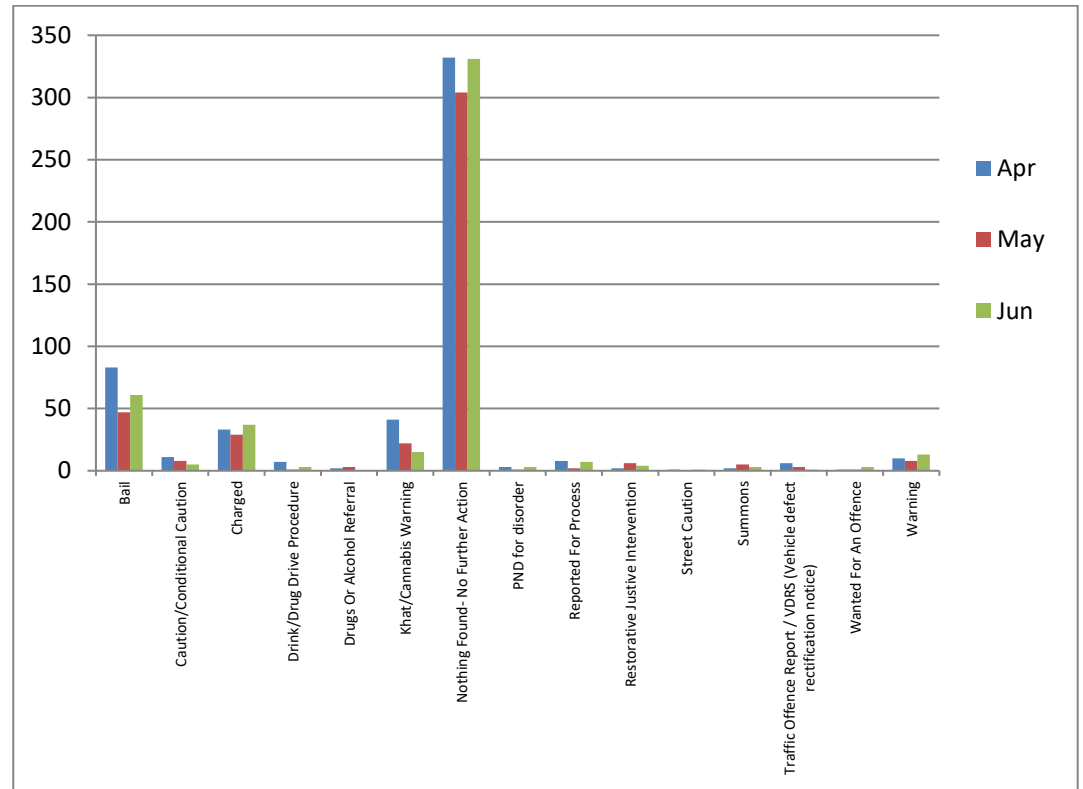
Arrests – April – June 2017 compared to April – June 2018

District	2017	2018	% Diff
Ashford	12	13	+8.3%
Canterbury	22	29	+31.8%
Dartford	32	45	+40.6%
Dover	6	4	-33.3%
Gravesham	20	34	+70.0%
Maidstone	34	26	-23.5%
Medway	58	107	+84.5%
Sevenoaks	17	22	+29.4%
Shepway	18	9	-50.0%
Swale	8	13	+62.5%
Thanet	38	30	-21.1%
Tonbridge and Malling	12	8	-33.3%
Tunbridge Wells	12	13	+8.3%
Total	289	353	+22.1%



Outcomes- Monthly comparison April-June 2018

Outcome	Apr	May	Jun	Total
Bail	83	47	61	191
Caution/Conditional Caution	11	8	5	24
Charged	33	29	37	99
Drink/Drug Drive Procedure	7	1	3	11
Drugs or Alcohol Referral	2	3		5
Khat/Cannabis Warning	41	22	15	78
Nothing Found- No Further Action	332	304	331	967
PND for Disorder	3	1	3	7
Reported For Process	8	2	7	17
Restorative Justice Intervention	2	6	4	12
Street Caution	1		1	2
Summons	2	5	3	10
Traffic Offence Report/VDRS (Vehicle Defect Rectification Notice)	6	3	1	10
Wanted For An Offence	1	1	3	5
Warning	10	8	13	31
Total	542	440	487	1469



Reason for search and Arrest Category

