

Pace Searches and Arrest after Search

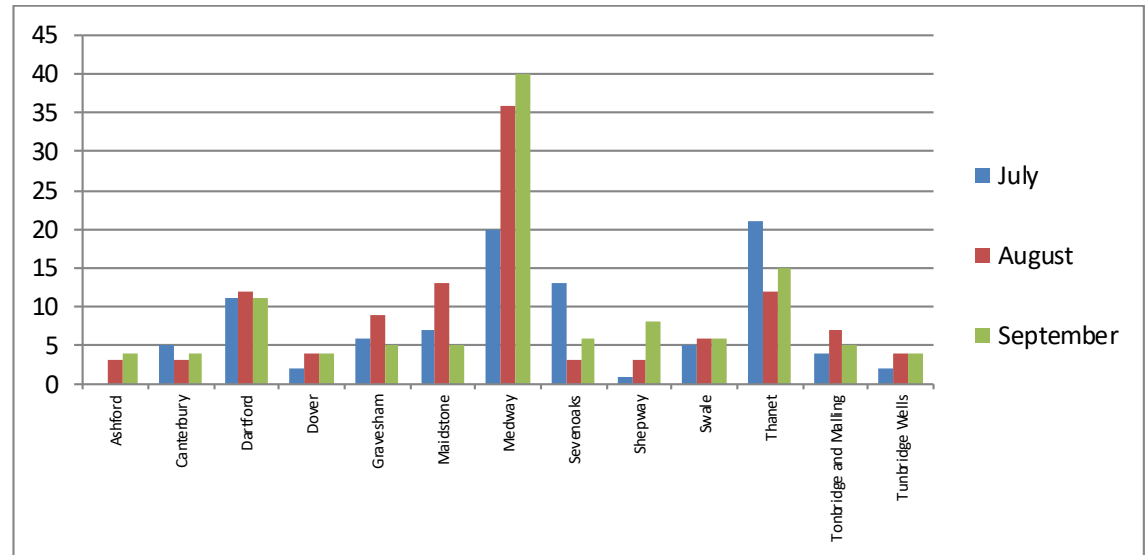
July – September 2018

Searches by district comparing the percentage of persons searched by ethnic code with the comparative data from the Census (2011) data

District	Total	White				Black				Asian				Mixed				Other Ethnic group			
		No.	% of Total	Census 2011 %	% diff	No.	% of Total	Census 2011 %	% diff	No.	% of Total	Census 2011 %	% diff	No.	% of Total	Census 2011 %	% diff	No.	% of Total	Census 2011 %	% diff
Ashford	47	33	85.7%	93.7%	-8.0%	3	14.3%	1.2%	+13.1%	5	0.0%	10.6%	-10.6%	3	0.0%	1.4%	-1.4%	3	0.0%	0.3%	-0.3%
Canterbury	72	45	75.0%	93.0%	-18.0%	14	16.7%	1.3%	+15.4%	7	0.0%	9.7%	-9.7%	1	0.0%	1.7%	-1.7%	5	8.3%	0.6%	+7.7%
Dartford	166	117	76.5%	87.4%	-10.9%	29	14.7%	3.7%	+11.0%	8	0.0%	4.8%	-4.8%	9	0.0%	2.2%	-2.2%	3	8.8%	0.8%	+8.0%
Dover	48	37	40.0%	96.7%	-56.7%	2	0.0%	0.3%	-0.3%	4	10.0%	8.3%	+1.7%	0	0.0%	0.9%	-0.9%	5	50.0%	0.2%	+49.8%
Gravesham	140	69	75.0%	82.8%	-7.8%	26	15.0%	2.8%	+12.2%	20	5.0%	14.3%	-9.3%	9	5.0%	2.0%	+3.0%	16	0.0%	1.9%	-1.9%
Maidstone	110	79	80.0%	94.1%	-14.1%	15	4.0%	0.9%	+3.1%	5	4.0%	4.5%	-0.5%	2	0.0%	1.5%	-1.5%	9	12.0%	0.3%	+11.7%
Medway	311	180	60.4%	89.6%	-29.2%	76	22.9%	2.5%	+20.4%	19	5.2%	6.1%	-0.9%	7	2.1%	2.0%	+0.1%	29	9.4%	0.7%	+8.7%
Sevenoaks	104	97	86.4%	95.8%	-9.4%	3	4.5%	0.7%	+3.8%	0	0.0%	0.0%	0.0%	1	0.0%	1.5%	-1.5%	3	9.1%	0.2%	+8.9%
Shepway	66	54	75.0%	94.7%	-19.7%	4	16.7%	0.4%	+16.2%	2	0.0%	3.0%	-3.0%	1	0.0%	1.2%	-1.2%	5	8.3%	0.3%	+8.0%
Swale	62	54	82.4%	96.6%	-14.2%	3	5.9%	1.0%	+4.9%	0	0.0%	0.0%	0.0%	2	5.9%	1.2%	+4.7%	3	5.9%	0.2%	+5.7%
Thanet	180	147	81.3%	95.5%	-14.3%	9	10.4%	0.7%	+9.7%	4	2.1%	2.2%	-0.1%	3	0.0%	1.6%	-1.6%	17	6.3%	0.3%	+6.0%
Tonbridge and Malling	65	55	100.0%	95.9%	+4.1%	1	0.0%	0.3%	-0.3%	1	0.0%	1.5%	-1.5%	2	0.0%	1.4%	-1.4%	6	0.0%	0.3%	-0.3%
Tunbridge Wells	60	52	90.0%	94.9%	-4.9%	0	0.0%	0.6%	-0.6%	4	10.0%	6.7%	+3.3%	1	0.0%	1.6%	-1.6%	3	0.0%	0.3%	-0.3%
Total	1431	1019	74.2%	93.1%	-18.9%	185	13.1%	1.3%	+11.7%	79	3.0%	0.0%	+3.0%	41	1.2%	1.6%	-0.4%	107	8.5%	0.5%	+8.0%

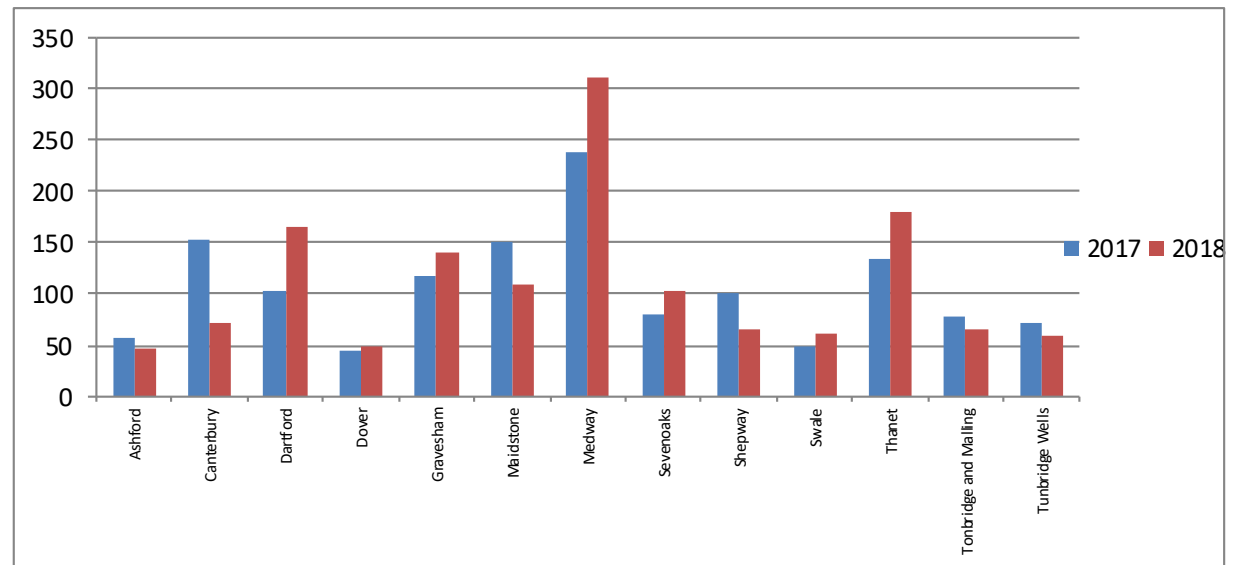
Searches - Monthly comparison July – September 2018

District	July	August	September	Total
Ashford	8	20	19	47
Canterbury	22	24	26	72
Dartford	37	88	41	166
Dover	16	22	10	48
Gravesham	43	48	49	140
Maidstone	31	58	21	110
Medway	80	96	135	311
Sevenoaks	34	23	47	104
Shepway	21	11	34	66
Swale	25	25	12	62
Thanet	75	52	53	180
Tonbridge and Malling	11	23	31	65
Tunbridge Wells	13	27	20	60
Total	416	517	498	1431



Searches – July – September 2017 compared to July – September 2018

District	2017	2018	% Diff
Ashford	57	47	-17.5%
Canterbury	153	72	-52.9%
Dartford	103	166	+61.2%
Dover	44	48	+9.1%
Gravesham	118	140	+18.6%
Maidstone	152	110	-27.6%
Medway	239	311	+30.1%
Sevenoaks	81	104	+28.4%
Shepway	101	66	-34.7%
Swale	49	62	+26.5%
Thanet	134	180	+34.3%
Tonbridge and Malling	79	65	-17.7%
Tunbridge Wells	71	60	-15.5%
Total	1381	1431	+3.6%



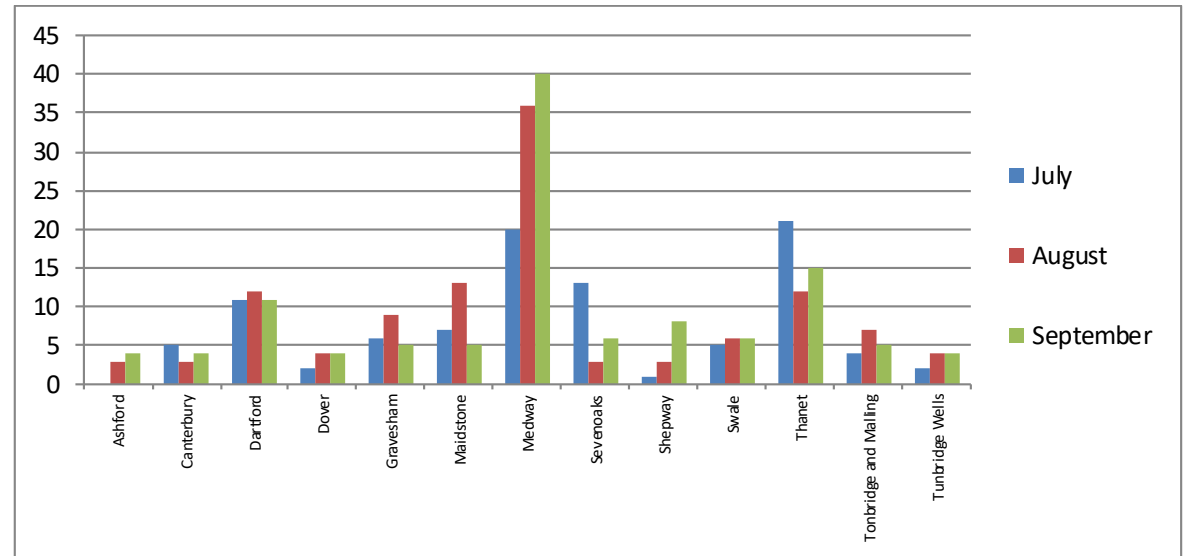
Arrests after Search

Arrests by district comparing the percentage of persons arrested by ethnic code with the comparative data from the Census (2011) data.

District	Total	White				Black				Asian				Mixed				Other Ethnic group			
		No.	% of Total	Census 2011 %	% diff	No.	% of Total	Census 2011 %	% diff	No.	% of Total	Census 2011 %	% diff	No.	% of Total	Census 2011 %	% diff	No.	% of Total	Census 2011 %	% diff
Ashford	7	6	85.7%	93.7%	-8.0%	1	14.3%	1.2%	+13.1%	0	0.0%	10.6%	-10.6%	0	0.0%	1.4%	-1.4%	0	0.0%	0.3%	-0.3%
Canterbury	12	9	75.0%	93.0%	-18.0%	2	16.7%	1.3%	+15.4%	0	0.0%	9.7%	-9.7%	0	0.0%	1.7%	-1.7%	1	8.3%	0.6%	+7.7%
Dartford	34	26	76.5%	87.4%	-10.9%	5	14.7%	3.7%	+11.0%	0	0.0%	4.8%	-4.8%	0	0.0%	2.2%	-2.2%	3	8.8%	0.8%	+8.0%
Dover	10	4	40.0%	96.7%	-56.7%	0	0.0%	0.3%	-0.3%	1	10.0%	8.3%	+1.7%	0	0.0%	0.9%	-0.9%	5	50.0%	0.2%	+49.8%
Gravesham	20	15	75.0%	82.8%	-7.8%	3	15.0%	2.8%	+12.2%	1	5.0%	14.3%	-9.3%	1	5.0%	2.0%	+3.0%	0	0.0%	1.9%	-1.9%
Maidstone	25	20	80.0%	94.1%	-14.1%	1	4.0%	0.9%	+3.1%	1	4.0%	4.5%	-0.5%	0	0.0%	1.5%	-1.5%	3	12.0%	0.3%	+11.7%
Medway	96	58	60.4%	89.6%	-29.2%	22	22.9%	2.5%	+20.4%	5	5.2%	6.1%	-0.9%	2	2.1%	2.0%	+0.1%	9	9.4%	0.7%	+8.7%
Sevenoaks	22	19	86.4%	95.8%	-9.4%	1	4.5%	0.7%	+3.8%	0	0.0%	0.0%	0.0%	0	0.0%	1.5%	-1.5%	2	9.1%	0.2%	+8.9%
Shepway	12	9	75.0%	94.7%	-19.7%	2	16.7%	0.4%	+16.2%	0	0.0%	3.0%	-3.0%	0	0.0%	1.2%	-1.2%	1	8.3%	0.3%	+8.0%
Swale	17	14	82.4%	96.6%	-14.2%	1	5.9%	1.0%	+4.9%	0	0.0%	0.0%	0.0%	1	5.9%	1.2%	+4.7%	1	5.9%	0.2%	+5.7%
Thanet	48	39	81.3%	95.5%	-14.3%	5	10.4%	0.7%	+9.7%	1	2.1%	2.2%	-0.1%	0	0.0%	1.6%	-1.6%	3	6.3%	0.3%	+6.0%
Tonbridge and Malling	16	16	100.0%	95.9%	+4.1%	0	0.0%	0.3%	-0.3%	0	0.0%	1.5%	-1.5%	0	0.0%	1.4%	-1.4%	0	0.0%	0.3%	-0.3%
Tunbridge Wells	10	9	90.0%	94.9%	-4.9%	0	0.0%	0.6%	-0.6%	1	10.0%	6.7%	+3.3%	0	0.0%	1.6%	-1.6%	0	0.0%	0.3%	-0.3%
Total	329	244	74.2%	93.1%	-18.9%	43	13.1%	1.3%	+11.7%	10	3.0%	0.0%	+3.0%	4	1.2%	1.6%	-0.4%	28	8.5%	0.5%	+8.0%

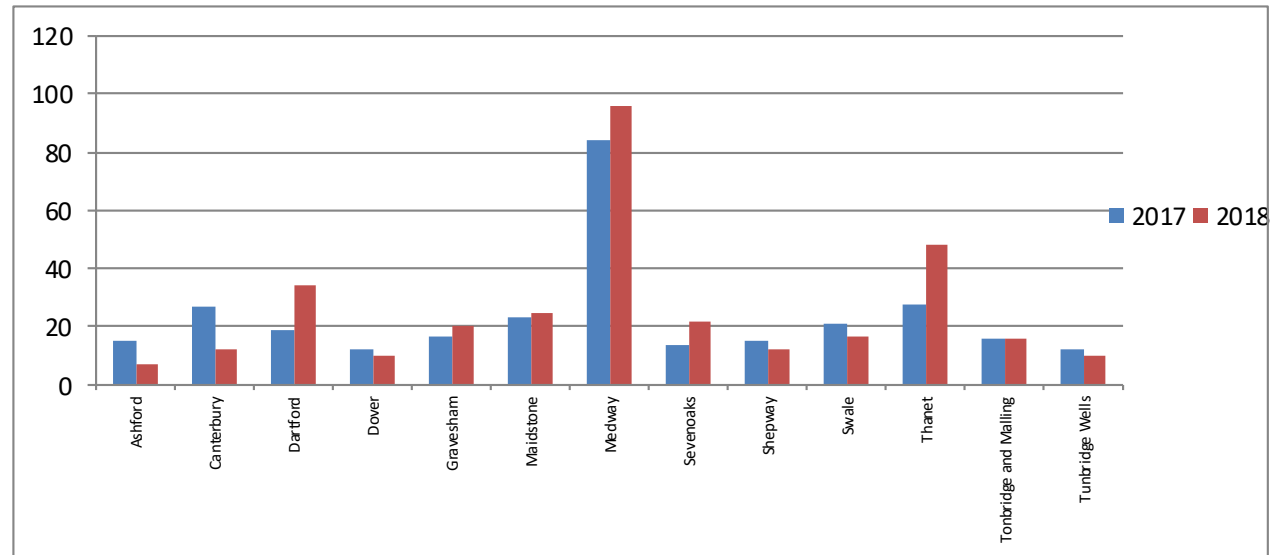
Arrests - Monthly comparison July – September 2018

District	July	August	September	Total
Ashford		3	4	7
Canterbury	5	3	4	12
Dartford	11	12	11	34
Dover	2	4	4	10
Gravesham	6	9	5	20
Maidstone	7	13	5	25
Medway	20	36	40	96
Sevenoaks	13	3	6	22
Shepway	1	3	8	12
Swale	5	6	6	17
Thanet	21	12	15	48
Tonbridge and Malling	4	7	5	16
Tunbridge Wells	2	4	4	10
Total	97	115	117	329



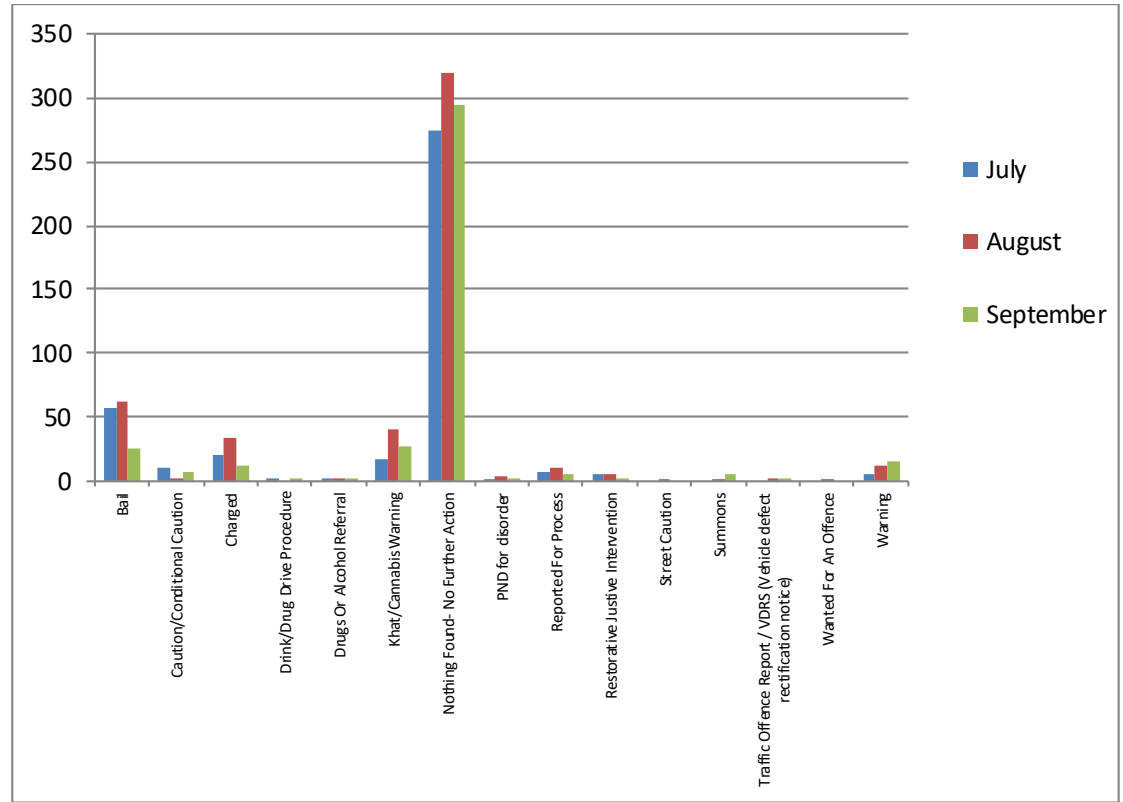
Arrests – July – September 2017 compared to July – September 2018

District	2017	2018	% Diff
Ashford	15	7	-53.3%
Canterbury	27	12	-55.6%
Dartford	19	34	+78.9%
Dover	12	10	-16.7%
Gravesham	17	20	+17.6%
Maidstone	23	25	+8.7%
Medway	84	96	+14.3%
Sevenoaks	14	22	+57.1%
Shepway	15	12	-20.0%
Swale	21	17	-19.0%
Thanet	28	48	+71.4%
Tonbridge and Malling	16	16	0.0%
Tunbridge Wells	12	10	-16.7%
Total	303	329	+8.6%



Outcomes- Monthly comparison July – September 2018

Outcome	July	August	September	Total
Bail	58	62	25	145
Caution/Conditional Caution	11	2	8	21
Charged	20	34	12	66
Drink/Drug Drive Procedure	3	0	2	5
Drugs or Alcohol Referral	2	3	2	7
Khat/Cannabis Warning	17	40	28	85
Nothing Found- No Further Action	275	319	295	889
PND for Disorder	1	4	2	7
Reported For Process	8	10	6	24
Restorative Justice Intervention	6	6	2	14
Street Caution	0	1	0	1
Summons	0	1	5	6
Traffic Offence Report/VDRS (Vehicle Defect Rectification Notice)	0	2	2	4
Wanted For An Offence	0	1	0	1
Warning	6	13	16	35
Total	407	498	405	1310



Reason for search and Arrest Category

