

Pace Searches and Arrest after Search October – December 2018

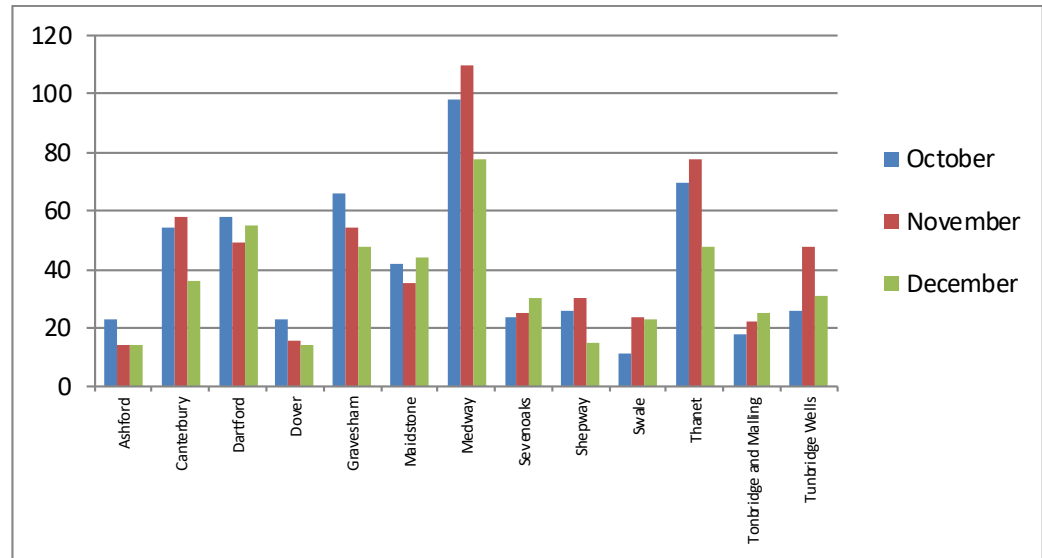
Searches by district comparing the percentage of persons searched by ethnic code with the comparative data from the Census (2011) data

District	Total	White				Black				Asian				Mixed				Other Ethnic group			
		No.	% of Total	Census 2011 %	% diff	No.	% of Total	Census 2011 %	% diff	No.	% of Total	Census 2011 %	% diff	No.	% of Total	Census 2011 %	% diff	No.	% of Total	Census 2011 %	% diff
Ashford	51	40	85.7%	93.7%	-8.0%	6	14.3%	1.2%	13.1%	0	0.0%	10.6%	-10.6%	2	0.0%	1.4%	-1.4%	3	0.0%	0.3%	-0.3%
Canterbury	148	102	75.0%	93.0%	-18.0%	23	16.7%	1.3%	15.4%	3	0.0%	9.7%	-9.7%	6	0.0%	1.7%	-1.7%	14	8.3%	0.6%	7.7%
Dartford	162	116	76.5%	87.4%	-10.9%	19	14.7%	3.7%	11.0%	1	0.0%	4.8%	-4.8%	2	0.0%	2.2%	-2.2%	24	8.8%	0.8%	8.0%
Dover	53	30	40.0%	96.7%	-56.7%	3	0.0%	0.3%	-0.3%	2	10.0%	8.3%	1.7%	2	0.0%	0.9%	-0.9%	16	50.0%	0.2%	49.8%
Gravesham	168	72	75.0%	82.8%	-7.8%	23	15.0%	2.8%	12.2%	19	5.0%	14.3%	-9.3%	13	5.0%	2.0%	3.0%	41	0.0%	1.9%	-1.9%
Maidstone	121	90	80.0%	94.1%	-14.1%	8	4.0%	0.9%	3.1%	4	4.0%	4.5%	-0.5%	2	0.0%	1.5%	-1.5%	17	12.0%	0.3%	11.7%
Medway	286	174	60.4%	89.6%	-29.2%	52	22.9%	2.5%	20.4%	15	5.2%	6.1%	-0.9%	7	2.1%	2.0%	0.1%	38	9.4%	0.7%	8.7%
Sevenoaks	79	55	86.4%	95.8%	-9.4%	6	4.5%	0.7%	3.8%	2	0.0%	0.0%	0.0%	1	0.0%	1.5%	-1.5%	15	9.1%	0.2%	8.9%
Shepway	71	47	75.0%	94.7%	-19.7%	4	16.7%	0.4%	16.2%	3	0.0%	3.0%	-3.0%	0	0.0%	1.2%	-1.2%	17	8.3%	0.3%	8.0%
Swale	58	55	82.4%	96.6%	-14.2%	2	5.9%	1.0%	4.9%	0	0.0%	0.0%	0.0%	1	5.9%	1.2%	4.7%	0	5.9%	0.2%	5.7%
Thanet	196	161	81.3%	95.5%	-14.3%	9	10.4%	0.7%	9.7%	0	2.1%	2.2%	-0.1%	8	0.0%	1.6%	-1.6%	18	6.3%	0.3%	6.0%
Tonbridge and Malling	65	56	100.0%	95.9%	4.1%	1	0.0%	0.3%	-0.3%	1	0.0%	1.5%	-1.5%	0	0.0%	1.4%	-1.4%	7	0.0%	0.3%	-0.3%
Tunbridge Wells	105	84	90.0%	94.9%	-4.9%	1	0.0%	0.6%	-0.6%	2	10.0%	6.7%	3.3%	4	0.0%	1.6%	-1.6%	14	0.0%	0.3%	-0.3%
Total	1563	1082	74.2%	93.1%	-18.9%	157	13.1%	1.3%	11.7%	52	3.0%	0.0%	3.0%	48	1.2%	1.6%	-0.4%	224	8.5%	0.5%	8.0%

- The ethnic classification data used for the comparison is the data from the 2011 Census
- The percentage difference column shows the percentage difference between the percentages of the persons searched compared to the percentage in the Census (2011), if it is in **Red (heading 3)** the percentage of persons searched is higher than the Census (2011) data and lower if it is in **Green (heading 4)**
- Most of the ethnic groups are self-explanatory but the "Other" ethnic group consists of the following; Chinese, Other, Not stated, Not Recorded or Refused.
- During October – December 2018 the force conducted 1563 searches compared to 1650 in the same period in 2017 a 5% decrease.
- 1082 persons searched were of a white ethnic background 74% of the total. This was 19% lower than the percentage (93%) in the Census (2011).
- The highest proportion from a minority ethnic group searched were those of a Black ethnicity 157, 13%. This was 12% higher than the percentage (1%) in the Census (2011).

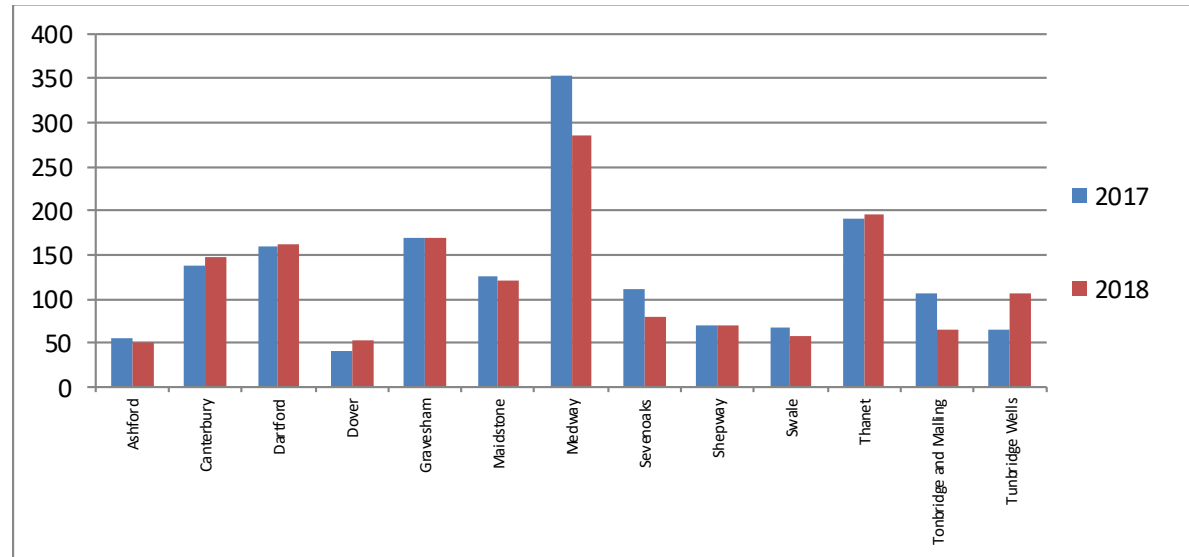
Searches - Monthly comparison 2018

District	October	November	December	Total
Ashford	23	14	14	51
Canterbury	54	58	36	148
Dartford	58	49	55	162
Dover	23	16	14	53
Gravesham	66	54	48	168
Maidstone	42	35	44	121
Medway	98	110	78	286
Sevenoaks	24	25	30	79
Shepway	26	30	15	71
Swale	11	24	23	58
Thanet	70	78	48	196
Tonbridge and Malling	18	22	25	65
Tunbridge Wells	26	48	31	105
Total	539	563	461	1563



Searches – October – December 2017 compared to October – December 2018

District	2017	2018	% Diff
Ashford	56	51	-8.9%
Canterbury	138	148	+7.2%
Dartford	160	162	+1.3%
Dover	40	53	+32.5%
Gravesham	168	168	0.0%
Maidstone	125	121	-3.2%
Medway	352	286	-18.8%
Sevenoaks	110	79	-28.2%
Shepway	71	71	0.0%
Swale	68	58	-14.7%
Thanet	192	196	+2.1%
Tonbridge and Malling	105	65	-38.1%
Tunbridge Wells	65	105	+61.5%
Total	1650	1563	-5.3%



Arrests after Search

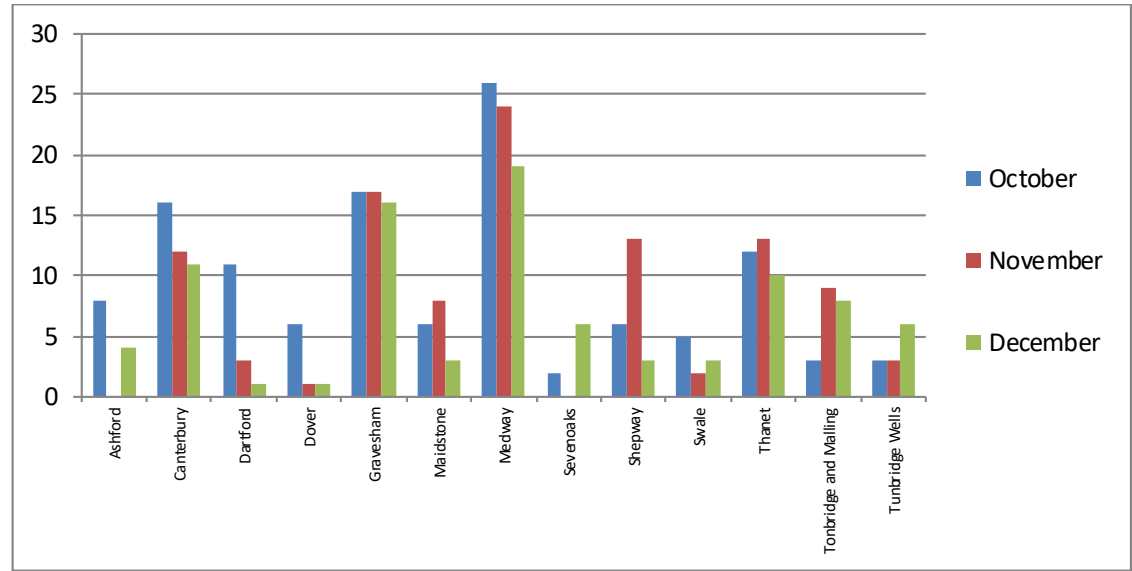
Arrests by district comparing the percentage of persons arrested by ethnic code with the comparative data from the Census (2011) data.

District	Total	White				Black				Asian				Mixed				Other Ethnic group			
		No.	% of Total	Census 2011 %	% diff	No.	% of Total	Census 2011 %	% diff	No.	% of Total	Census 2011 %	% diff	No.	% of Total	Census 2011 %	% diff	No.	% of Total	Census 2011 %	% diff
Ashford	12	9	75.0%	93.7%	-18.7%	0	0.0%	1.2%	-1.2%	1	8.3%	0.0%	+8.3%	1	8.3%	1.4%	+6.9%	1	8.3%	0.3%	+8.0%
Canterbury	39	28	71.8%	93.0%	-21.2%	2	5.1%	1.3%	+3.8%	1	2.6%	0.0%	+2.6%	1	2.6%	1.7%	+0.9%	7	17.9%	0.6%	+17.4%
Dartford	15	11	73.3%	87.4%	-14.0%	1	6.7%	3.7%	+3.0%	2	13.3%	0.0%	+13.3%	0	0.0%	2.2%	-2.2%	1	6.7%	0.8%	+5.9%
Dover	8	4	50.0%	96.7%	-46.7%	1	12.5%	0.3%	+12.2%	0	0.0%	10.0%	-10.0%	0	0.0%	0.9%	-0.9%	3	37.5%	0.2%	+37.3%
Gravesham	50	23	46.0%	82.8%	-36.8%	8	16.0%	2.8%	+13.2%	9	18.0%	5.0%	+13.0%	1	2.0%	2.0%	-0.0%	9	18.0%	1.9%	+16.1%
Maidstone	17	12	70.6%	94.1%	-23.5%	1	5.9%	0.9%	+5.0%	1	5.9%	4.0%	+1.9%	0	0.0%	1.5%	-1.5%	3	17.6%	0.3%	+17.3%
Medway	69	42	60.9%	89.6%	-28.8%	17	24.6%	2.5%	+22.1%	2	2.9%	5.2%	-2.3%	0	0.0%	2.0%	-2.0%	8	11.6%	0.7%	+10.9%
Sevenoaks	8	7	87.5%	95.8%	-8.3%	0	0.0%	0.7%	-0.7%	0	0.0%	0.0%	0.0%	0	0.0%	1.5%	-1.5%	1	12.5%	0.2%	+12.3%
Shepway	22	17	77.3%	94.7%	-17.4%	0	0.0%	0.4%	-0.4%	3	13.6%	0.0%	+13.6%	0	0.0%	1.2%	-1.2%	2	9.1%	0.3%	+8.8%
Swale	10	10	100.0%	96.6%	+3.4%	0	0.0%	1.0%	-1.0%	0	0.0%	0.0%	0.0%	0	0.0%	1.2%	-1.2%	0	0.0%	0.2%	-0.2%
Thanet	35	27	77.1%	95.5%	-18.4%	2	5.7%	0.7%	+5.0%	1	2.9%	2.1%	+0.8%	0	0.0%	1.6%	-1.6%	5	14.3%	0.3%	+14.0%
Tonbridge and Malling	20	16	80.0%	95.9%	-15.9%	1	5.0%	0.3%	+4.7%	0	0.0%	0.0%	0.0%	0	0.0%	1.4%	-1.4%	3	15.0%	0.3%	+14.7%
Tunbridge Wells	12	10	83.3%	94.9%	-11.6%	0	0.0%	0.6%	-0.6%	0	0.0%	10.0%	-10.0%	0	0.0%	1.6%	-1.6%	2	16.7%	0.3%	+16.3%
Total	317	216	68.1%	93.1%	-24.9%	33	10.4%	1.3%	+9.1%	20	6.3%	3.0%	+3.3%	3	0.9%	1.6%	-0.6%	45	14.2%	0.5%	+13.7%

- The ethnic classification data used for the comparison is the data from the 2011 Census
- The % difference column shows the percentage difference between the percentages of the persons searched compared to the percentage in the Census (2011), if it is in **Red (heading 3)** the percentage of persons searched is higher than the Census (2011) data and lower if it is in **Green (heading 4)**
- Most of the ethnic groups are self-explanatory but the "Other" ethnic group consists of the following; Chinese, Other, Not stated, Not Recorded or Refused.
- During October – December 2018, 317 persons were arrested as the result of a search compared to 378 in the same period in 2017 a 16% decrease.
- 216 persons searched were of a white ethnic background 68% of the total. This was 25% lower than the in the Census 2011 (93%).
- The highest proportion from a minority ethnic group arrested were those of a Black ethnicity 33, (10%). This was 9% higher than in the Census 2011 (1%).
- The largest group in the reason for search was Drugs with 63% of searches.
- The largest classification for the reason for arrest group was Drug Offences, 60% of all arrests.

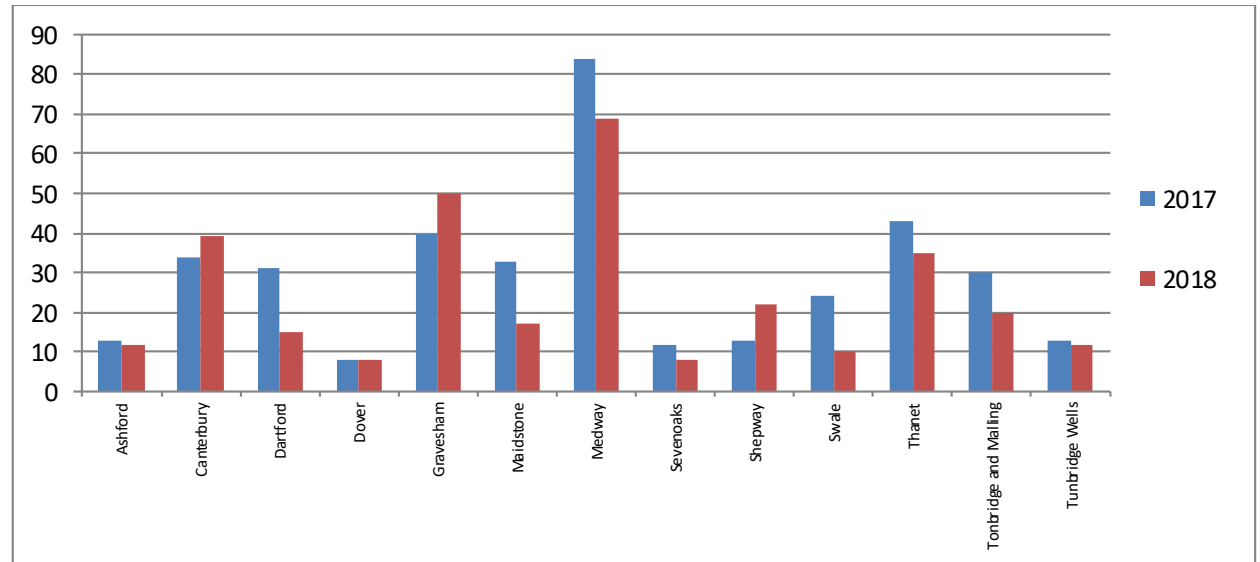
Arrests - Monthly comparison October – December 2018

District	October	November	December	Total
Ashford	8		4	12
Canterbury	16	12	11	39
Dartford	11	3	1	15
Dover	6	1	1	8
Gravesham	17	17	16	50
Maidstone	6	8	3	17
Medway	26	24	19	69
Sevenoaks	2		6	8
Shepway	6	13	3	22
Swale	5	2	3	10
Thanet	12	13	10	35
Tonbridge and Malling	3	9	8	20
Tunbridge Wells	3	3	6	12
Total	121	105	91	317



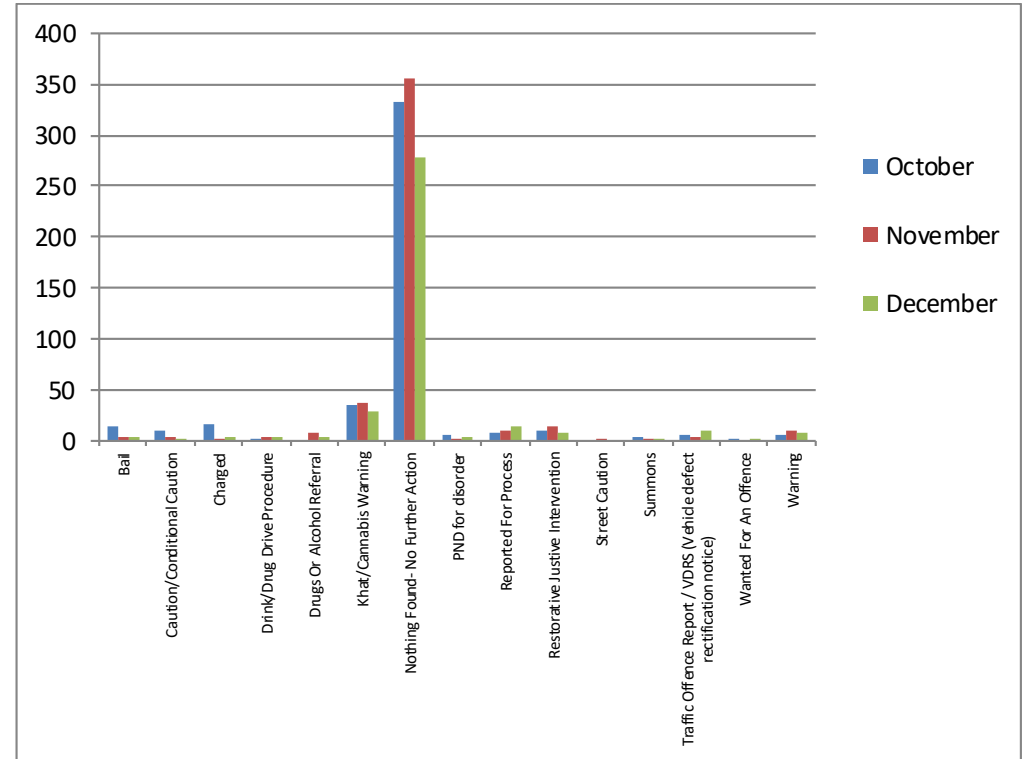
Arrests – October – December 2017 compared to October – December 2018

District	2017	2018	% Diff
Ashford	13	12	-7.7%
Canterbury	34	39	+14.7%
Dartford	31	15	-51.6%
Dover	8	8	0.0%
Gravesham	40	50	+25.0%
Maidstone	33	17	-48.5%
Medway	84	69	-17.9%
Sevenoaks	12	8	-33.3%
Shepway	13	22	+69.2%
Swale	24	10	-58.3%
Thanet	43	35	-18.6%
Tonbridge and Malling	30	20	-33.3%
Tunbridge Wells	13	12	-7.7%
Total	378	317	-16.1%



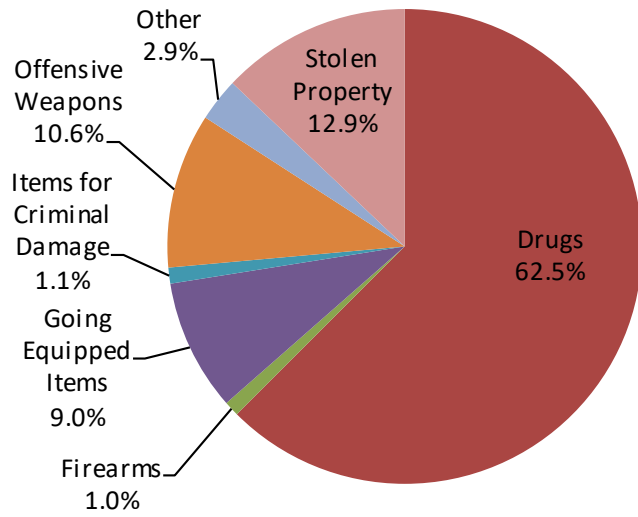
Outcomes- Monthly comparison October – December 2018

Outcome	October	November	December	Total
Bail	15	3	3	21
Caution/Conditional Caution	10	4	2	16
Charged	17	2	4	23
Drink/Drug Drive Procedure	2	4	3	9
Drugs or Alcohol Referral	0	7	3	10
Khat/Cannabis Warning	36	37	29	102
Nothing Found- No Further Action	332	356	278	966
PND for Disorder	6	2	3	11
Reported For Process	8	10	14	32
Restorative Justice Intervention	10	14	9	33
Street Caution	0	1	0	1
Summons	3	1	2	6
Traffic Offence Report/VDRS (Vehicle Defect Rectification Notice)	6	4	10	20
Wanted For An Offence	1	0	1	2
Warning	5	10	9	24
Total	451	455	370	1276



Reason for search and Arrest Category

Reason for Search



Reason for Arrest

