

Pace Searches and Arrest after Search

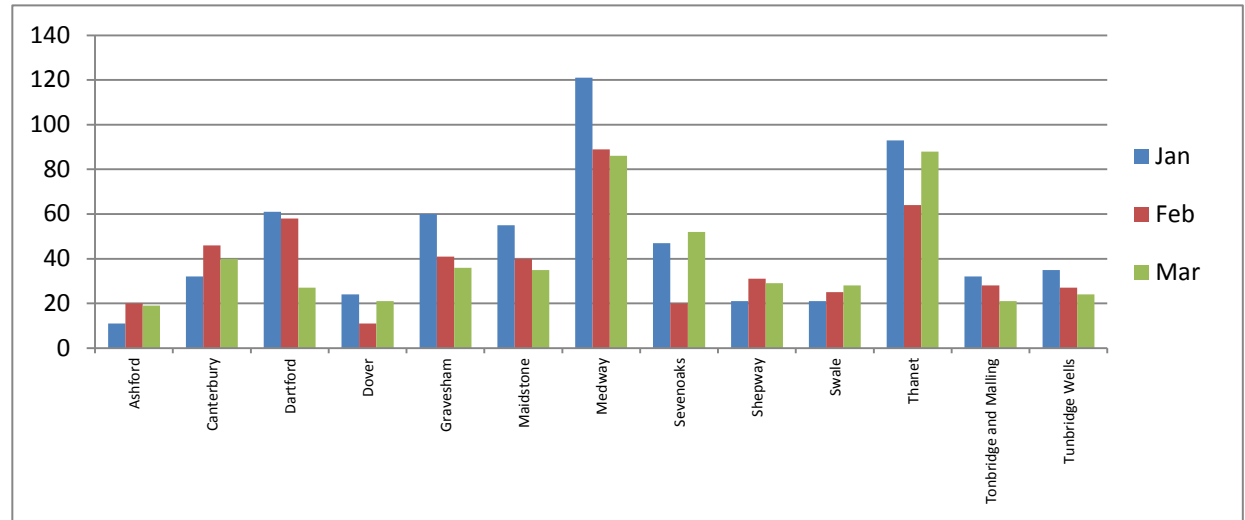
January – March 2018

Searches by district comparing the percentage of persons searched by ethnic code with the comparative data from the Census (2011) data

District	Total	White				Black				Asian				Mixed				Other Ethnic group			
		No.	% of Total	Census 2011 %	% diff	No.	% of Total	Census 2011 %	% diff	No.	% of Total	Census 2011 %	% diff	No.	% of Total	Census 2011 %	% diff	No.	% of Total	Census 2011 %	% diff
Ashford	50	37	74.0%	93.7%	-19.7%	7	14.0%	1.2%	+12.8%	3	6.0%	3.4%	+2.6%	1	2.0%	1.4%	+0.6%	2	4.0%	0.3%	+3.7%
Canterbury	118	71	60.2%	93.0%	-32.9%	31	26.3%	1.3%	+25.0%	3	2.5%	3.4%	-0.9%	5	4.2%	1.7%	+2.5%	8	6.8%	0.6%	+6.2%
Dartford	146	107	73.3%	87.4%	-14.1%	20	13.7%	3.7%	+10.0%	6	4.1%	6.0%	-1.8%	3	2.1%	2.2%	-0.2%	10	6.8%	0.8%	+6.1%
Dover	56	39	69.6%	96.7%	-27.0%	7	12.5%	0.3%	+12.2%	2	3.6%	1.8%	+1.8%	2	3.6%	0.9%	+2.6%	6	10.7%	0.2%	+10.5%
Gravesham	137	78	56.9%	82.8%	-25.9%	25	18.2%	2.8%	+15.4%	16	11.7%	10.4%	+1.3%	4	2.9%	2.0%	+0.9%	14	10.2%	1.9%	+8.3%
Maidstone	130	103	79.2%	94.1%	-14.9%	13	10.0%	0.9%	+9.1%	4	3.1%	3.2%	-0.1%	2	1.5%	1.5%	+0.0%	8	6.2%	0.3%	+5.8%
Medway	296	184	62.2%	89.6%	-27.5%	61	20.6%	2.5%	+18.1%	18	6.1%	5.2%	+0.9%	18	6.1%	2.0%	+4.1%	15	5.1%	0.7%	+4.4%
Sevenoaks	119	109	91.6%	95.8%	-4.2%	6	5.0%	0.7%	+4.3%	1	0.8%	1.8%	-1.0%	0	0.0%	1.5%	-1.5%	3	2.5%	0.2%	+2.3%
Shepway	81	63	77.8%	94.7%	-16.9%	7	8.6%	0.4%	+8.2%	3	3.7%	3.4%	+0.3%	1	1.2%	1.2%	+0.1%	7	8.6%	0.3%	+8.3%
Swale	74	56	75.7%	96.6%	-20.9%	9	12.2%	1.0%	+11.1%	2	2.7%	1.1%	+1.6%	3	4.1%	1.2%	+2.9%	4	5.4%	0.2%	+5.2%
Thanet	245	190	77.6%	95.5%	-18.0%	20	8.2%	0.7%	+7.5%	3	1.2%	1.9%	-0.6%	18	7.3%	1.6%	+5.7%	14	5.7%	0.3%	+5.4%
Tonbridge and Malling	81	70	86.4%	95.9%	-9.5%	3	3.7%	0.3%	+3.4%	1	1.2%	2.0%	-0.8%	1	1.2%	1.4%	-0.2%	6	7.4%	0.3%	+7.1%
Tunbridge Wells	86	72	83.7%	94.9%	-11.2%	3	3.5%	0.6%	+2.9%	5	5.8%	2.5%	+3.3%	0	0.0%	1.6%	-1.6%	6	7.0%	0.3%	+6.6%
Total	1619	1179	72.8%	93.1%	-20.2%	212	13.1%	1.3%	+11.8%	67	4.1%	3.5%	+0.6%	58	3.6%	1.6%	+2.0%	103	6.4%	0.5%	+5.9%

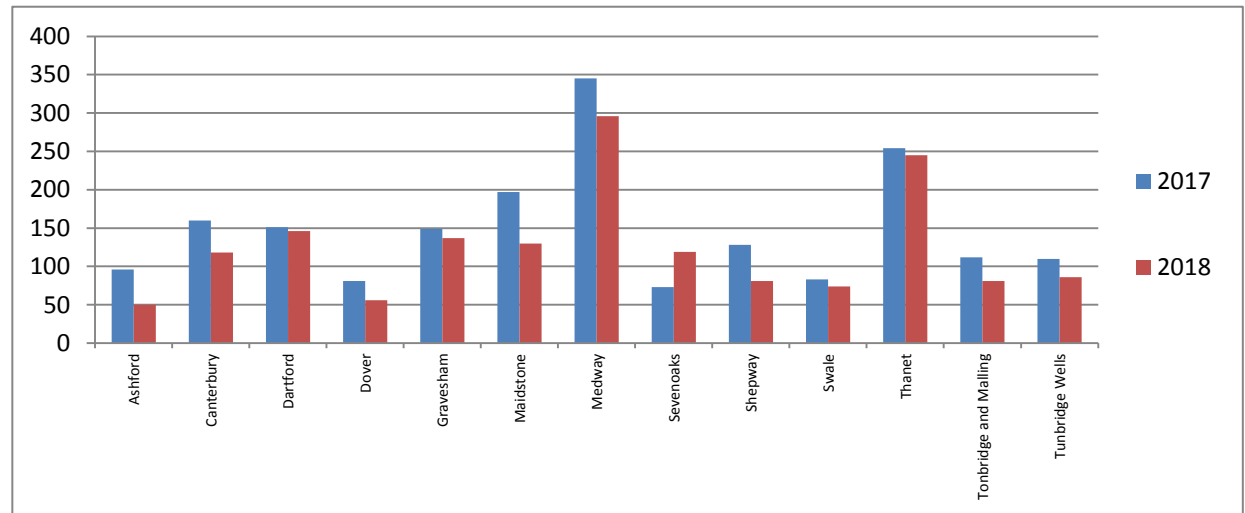
Searches - Monthly comparison January – March 2018

District	Jan	Feb	Mar	Total
Ashford	11	20	19	50
Canterbury	32	46	40	118
Dartford	61	58	27	146
Dover	24	11	21	56
Gravesham	60	41	36	137
Maidstone	55	40	35	130
Medway	121	89	86	296
Sevenoaks	47	20	52	119
Shepway	21	31	29	81
Swale	21	25	28	74
Thanet	93	64	88	245
Tonbridge and Malling	32	28	21	81
Tunbridge Wells	35	27	24	86
Total	613	500	506	1619



Searches – January – March 2017 compared to January - March 2018

District	2017	2018	% Diff
Ashford	96	50	-47.9%
Canterbury	160	118	-26.3%
Dartford	151	146	-3.3%
Dover	81	56	-30.9%
Gravesham	149	137	-8.1%
Maidstone	197	130	-34.0%
Medway	345	296	-14.2%
Sevenoaks	73	119	+63.0%
Shepway	128	81	-36.7%
Swale	83	74	-10.8%
Thanet	254	245	-3.5%
Tonbridge and Malling	112	81	-27.7%
Tunbridge Wells	110	86	-21.8%
Total	1939	1619	-16.5%



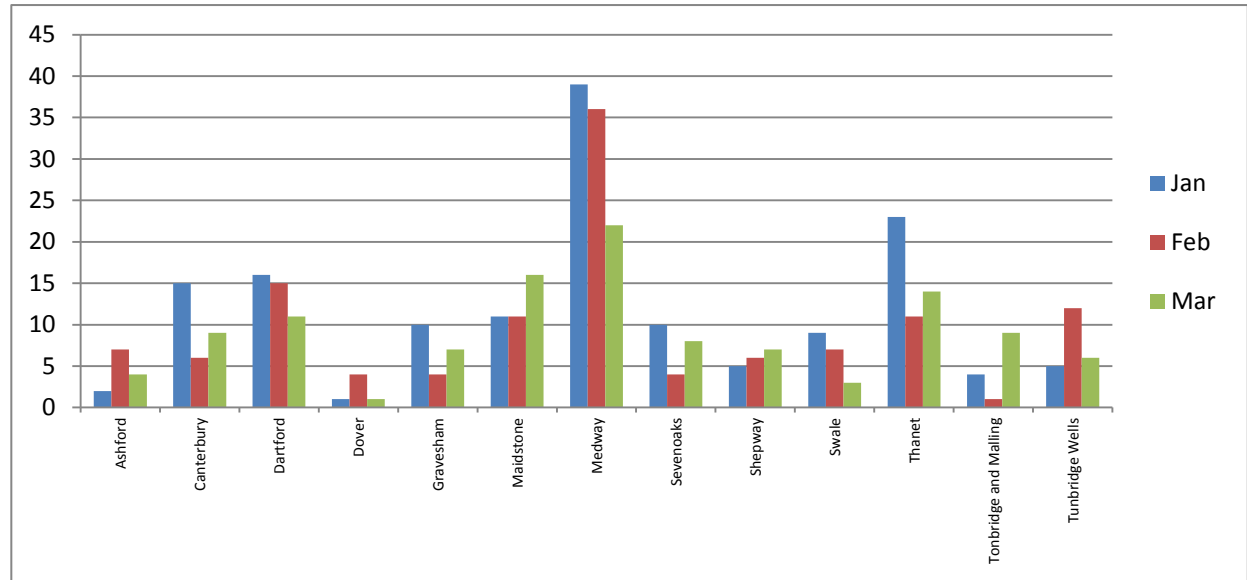
Arrests after Search

Arrests by district comparing the percentage of persons arrested by ethnic code with the comparative data from the Census (2011) data.

District	Total	White				Black				Asian				Mixed				Other Ethnic group			
		No.	% of Total	Census 2011 %	% diff	No.	% of Total	Census 2011 %	% diff	No.	% of Total	Census 2011 %	% diff	No.	% of Total	Census 2011 %	% diff	No.	% of Total	Census 2011 %	% diff
Ashford	13	9	69.2%	93.7%	-24.5%	3	23.1%	1.2%	+21.9%	0	0.0%	6.0%	-6.0%	0	0.0%	1.4%	-1.4%	1	7.7%	0.3%	+7.4%
Canterbury	30	16	53.3%	93.0%	-39.7%	10	33.3%	1.3%	+32.1%	1	3.3%	2.5%	+0.8%	0	0.0%	1.7%	-1.7%	3	10.0%	0.6%	+9.4%
Dartford	42	34	81.0%	87.4%	-6.4%	4	9.5%	3.7%	+5.8%	0	0.0%	4.1%	-4.1%	1	2.4%	2.2%	+0.2%	3	7.1%	0.8%	+6.4%
Dover	6	4	66.7%	96.7%	-30.0%	0	0.0%	0.3%	-0.3%	1	16.7%	3.6%	+13.1%	0	0.0%	0.9%	-0.9%	1	16.7%	0.2%	+16.4%
Gravesham	21	11	52.4%	82.8%	-30.4%	3	14.3%	2.8%	+11.4%	1	4.8%	11.7%	-6.9%	0	0.0%	2.0%	-2.0%	6	28.6%	1.9%	+26.7%
Maidstone	38	30	78.9%	94.1%	-15.2%	4	10.5%	0.9%	+9.6%	0	0.0%	3.1%	-3.1%	1	2.6%	1.5%	+1.1%	3	7.9%	0.3%	+7.6%
Medway	97	58	59.8%	89.6%	-29.8%	19	19.6%	2.5%	+17.1%	5	5.2%	6.1%	-0.9%	8	8.2%	2.0%	+6.3%	7	7.2%	0.7%	+6.5%
Sevenoaks	22	20	90.9%	95.8%	-4.9%	1	4.5%	0.7%	+3.8%	0	0.0%	0.8%	-0.8%	0	0.0%	1.5%	-1.5%	1	4.5%	0.2%	+4.3%
Shepway	18	15	83.3%	94.7%	-11.3%	1	5.6%	0.4%	+5.1%	0	0.0%	3.7%	-3.7%	0	0.0%	1.2%	-1.2%	2	11.1%	0.3%	+10.8%
Swale	19	14	73.7%	96.6%	-22.9%	2	10.5%	1.0%	+9.5%	0	0.0%	2.7%	-2.7%	1	5.3%	1.2%	+4.1%	2	10.5%	0.2%	+10.4%
Thanet	48	32	66.7%	95.5%	-28.9%	5	10.4%	0.7%	+9.7%	1	2.1%	1.2%	+0.9%	2	4.2%	1.6%	+2.5%	8	16.7%	0.3%	+16.4%
Tonbridge and Malling	14	11	78.6%	95.9%	-17.3%	0	0.0%	0.3%	-0.3%	0	0.0%	1.2%	-1.2%	1	7.1%	1.4%	+5.8%	2	14.3%	0.3%	+14.0%
Tunbridge Wells	23	14	60.9%	94.9%	-34.1%	2	8.7%	0.6%	+8.1%	3	13.0%	5.8%	+7.2%	0	0.0%	1.6%	-1.6%	4	17.4%	0.3%	+17.1%
Total	391	268	68.5%	93.1%	-24.5%	54	13.8%	1.3%	+12.5%	12	3.1%	4.1%	-1.1%	14	3.6%	1.6%	+2.0%	43	11.0%	0.5%	+10.5%

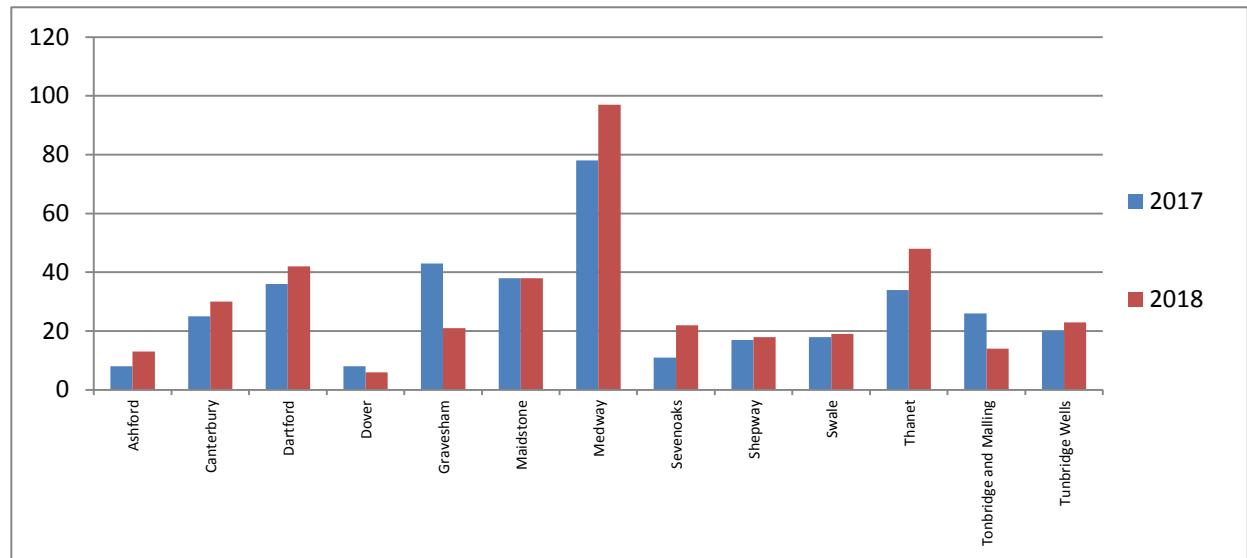
Arrests - Monthly comparison January – March 2018

District	Jan	Feb	Mar	Total
Ashford	2	7	4	13
Canterbury	15	6	9	30
Dartford	16	15	11	42
Dover	1	4	1	6
Gravesham	10	4	7	21
Maidstone	11	11	16	38
Medway	39	36	22	97
Sevenoaks	10	4	8	22
Shepway	5	6	7	18
Swale	9	7	3	19
Thanet	23	11	14	48
Tonbridge and Malling	4	1	9	14
Tunbridge Wells	5	12	6	23
Total	150	124	117	391



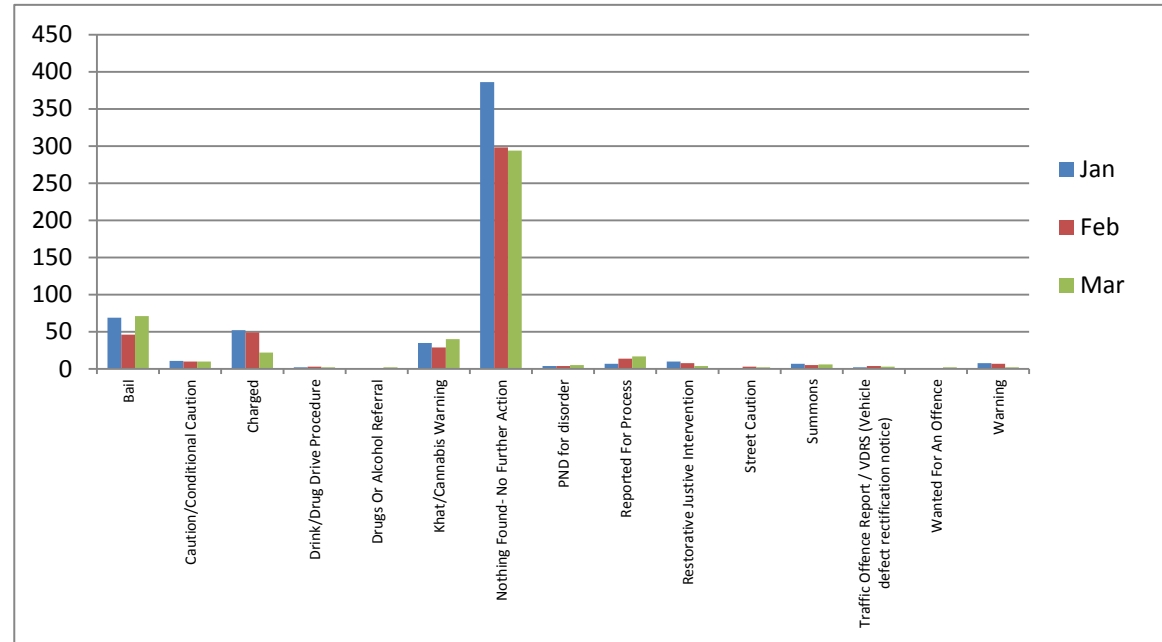
Arrests – January – March 2017 compared to January – March 2018

District	2017	2018	% Diff
Ashford	8	13	+62.5%
Canterbury	25	30	+20.0%
Dartford	36	42	+16.7%
Dover	8	6	-25.0%
Gravesham	43	21	-51.2%
Maidstone	38	38	0.0%
Medway	78	97	+24.4%
Sevenoaks	11	22	+100.0%
Shepway	17	18	+5.9%
Swale	18	19	+5.6%
Thanet	34	48	+41.2%
Tonbridge and Malling	26	14	-46.2%
Tunbridge Wells	20	23	+15.0%
Total	362	391	+8.0%



Outcomes- Monthly comparison October-December 2017

Outcome	Jan	Feb	Mar	Total
Bail	69	46	71	186
Caution/Conditional Caution	11	10	10	31
Charged	52	49	22	123
Drink/Drug Drive Procedure	2	3	2	7
Drugs or Alcohol Referral	1	0	2	3
Khat/Cannabis Warning	35	29	40	104
Nothing Found- No Further Action	386	298	294	978
PND for Disorder	4	4	5	13
Reported For Process	7	14	17	38
Restorative Justice Intervention	10	8	4	22
Street Caution		3	2	5
Summons	7	5	6	18
Traffic Offence Report/VDRS (Vehicle Defect Rectification Notice)	2	4	3	9
Wanted For An Offence	1	1	2	4
Warning	8	7	2	17
Total	595	481	482	1558



Reason for search and Arrest Category

