

Pace Searches and Arrest after Search

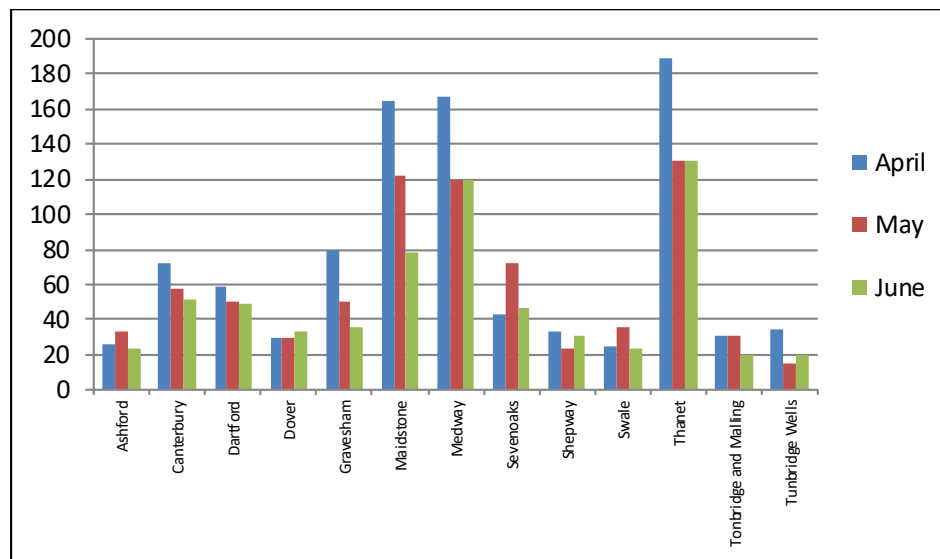
April – June 2019

Searches by district comparing the percentage of persons searched by ethnic code with the comparative data from the Census (2011) data

District	Total	White				Black				Asian				Mixed				Other Ethnic group			
		No.	% of Total	Census 2011 %	% diff	No.	% of Total	Census 2011 %	% diff	No.	% of Total	Census 2011 %	% diff	No.	% of Total	Census 2011 %	% diff	No.	% of Total	Census 2011 %	% diff
Ashford	82	55	67.1%	93.7%	-26.6%	14	17.1%	1.2%	+15.9%	3	3.7%	3.4%	+0.3%	4	4.9%	1.4%	+3.5%	6	7.3%	0.3%	+7.0%
Canterbury	180	129	71.7%	93.0%	-21.4%	33	18.3%	1.3%	+17.1%	4	2.2%	3.4%	-1.2%	7	3.9%	1.7%	+2.2%	7	3.9%	0.6%	+3.3%
Dartford	158	106	67.1%	87.4%	-20.3%	26	16.5%	3.7%	+12.8%	4	2.5%	6.0%	-3.4%	4	2.5%	2.2%	+0.3%	18	11.4%	0.8%	+10.6%
Dover	92	75	81.5%	96.7%	-15.2%	4	4.3%	0.3%	+4.0%	2	2.2%	1.8%	+0.4%	4	4.3%	0.9%	+3.4%	7	7.6%	0.2%	+7.4%
Gravesham	165	91	55.2%	82.8%	-27.7%	33	20.0%	2.8%	+17.2%	23	13.9%	10.4%	+3.5%	4	2.4%	2.0%	+0.4%	14	8.5%	1.9%	+6.6%
Maidstone	364	292	80.2%	94.1%	-13.9%	28	7.7%	0.9%	+6.8%	9	2.5%	3.2%	-0.7%	9	2.5%	1.5%	+1.0%	26	7.1%	0.3%	+6.8%
Medway	405	247	61.0%	89.6%	-28.7%	88	21.7%	2.5%	+19.2%	16	4.0%	5.2%	-1.2%	21	5.2%	2.0%	+3.2%	33	8.1%	0.7%	+7.4%
Sevenoaks	162	134	82.7%	95.8%	-13.1%	10	6.2%	0.7%	+5.4%	5	3.1%	1.8%	+1.3%	2	1.2%	1.5%	-0.2%	11	6.8%	0.2%	+6.6%
Shepway	87	67	77.0%	94.7%	-17.7%	9	10.3%	0.4%	+9.9%	2	2.3%	3.4%	-1.1%	2	2.3%	1.2%	+1.1%	7	8.0%	0.3%	+7.7%
Swale	84	68	81.0%	96.6%	-15.6%	6	7.1%	1.0%	+6.1%	0	0.0%	1.1%	-1.1%	2	2.4%	1.2%	+1.2%	8	9.5%	0.2%	+9.4%
Thanet	451	366	81.2%	95.5%	-14.4%	23	5.1%	0.7%	+4.4%	11	2.4%	1.9%	+0.6%	27	6.0%	1.6%	+4.4%	24	5.3%	0.3%	+5.0%
Tonbridge and Malling	82	66	80.5%	95.9%	-15.4%	5	6.1%	0.3%	+5.7%	1	1.2%	2.0%	-0.8%	0	0.0%	1.4%	-1.4%	10	12.2%	0.3%	+11.9%
Tunbridge Wells	69	58	84.1%	94.9%	-10.9%	2	2.9%	0.6%	+2.3%	1	1.4%	2.5%	-1.1%	4	5.8%	1.6%	+4.2%	4	5.8%	0.3%	+5.5%
Total	2381	1754	73.7%	93.1%	-19.4%	281	11.8%	1.3%	+10.5%	81	3.4%	3.5%	-0.1%	90	3.8%	1.6%	+2.2%	175	7.3%	0.5%	+6.9%

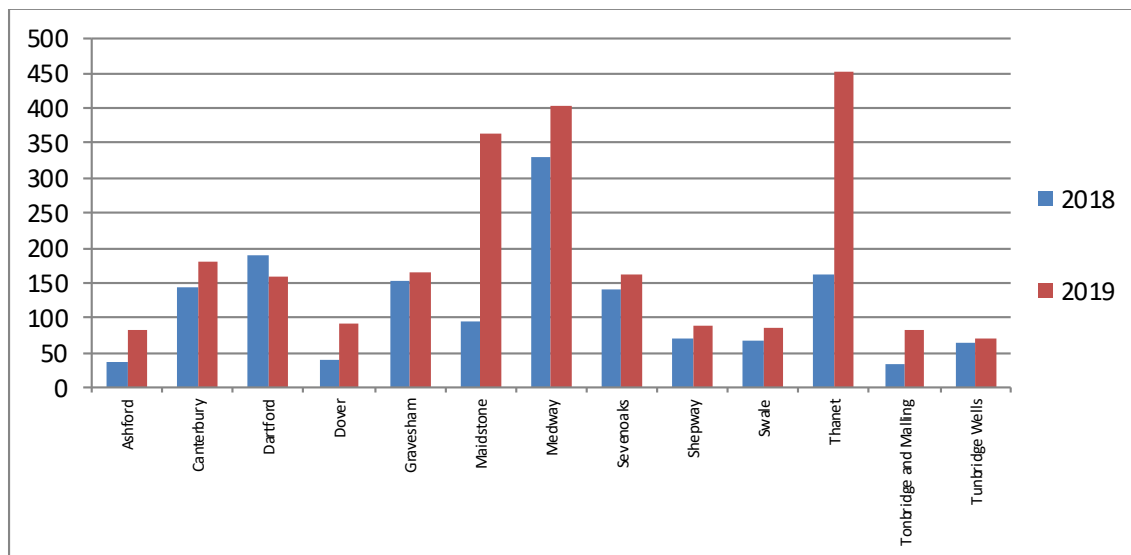
Searches - Monthly comparison 2019

District	April	May	June	Total
Ashford	26	33	23	82
Canterbury	72	57	51	180
Dartford	59	50	49	158
Dover	30	29	33	92
Gravesham	79	50	36	165
Maidstone	164	122	78	364
Medway	167	119	119	405
Sevenoaks	43	72	47	162
Shepway	33	23	31	87
Swale	25	36	23	84
Thanet	189	131	131	451
Tonbridge and Malling	31	31	20	82
Tunbridge Wells	34	15	20	69
Total	952	768	661	2381



Searches – April – June 2018 compared to April – June 2019

District	2018	2019	% Diff
Ashford	37	82	+121.6%
Canterbury	144	180	+25.0%
Dartford	189	158	-16.4%
Dover	39	92	+135.9%
Gravesham	154	165	+7.1%
Maidstone	94	364	+287.2%
Medway	330	405	+22.7%
Sevenoaks	141	162	+14.9%
Shepway	70	87	+24.3%
Swale	68	84	+23.5%
Thanet	162	451	+178.4%
Tonbridge and Malling	34	82	+141.2%
Tunbridge Wells	63	69	+9.5%
Total	1525	2381	+56.1%



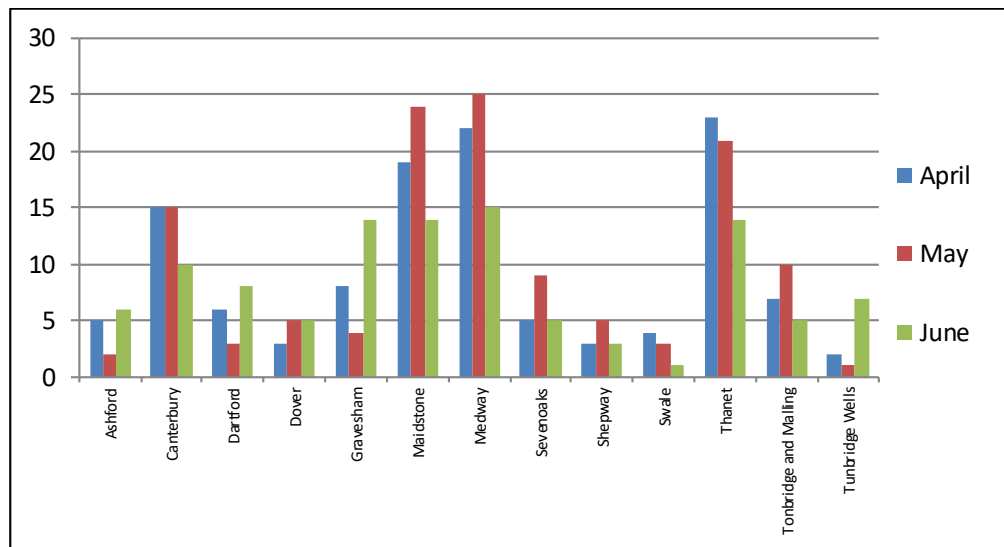
Arrests after Search

Arrests by district comparing the percentage of persons arrested by ethnic code with the comparative data from the Census (2011) data.

District	Total	White				Black				Asian				Mixed				Other Ethnic group			
		No.	% of Total	Census 2011 %	% diff	No.	% of Total	Census 2011 %	% diff	No.	% of Total	Census 2011 %	% diff	No.	% of Total	Census 2011 %	% diff	No.	% of Total	Census 2011 %	% diff
Ashford	13	12	92.3%	93.7%	-1.4%	0	0.0%	1.2%	-1.2%	1	7.7%	3.4%	+4.3%	0	0.0%	1.4%	-1.4%	0	0.0%	0.3%	-0.3%
Canterbury	40	28	70.0%	93.0%	-23.0%	8	20.0%	1.3%	+18.7%	2	5.0%	3.4%	+1.6%	0	0.0%	1.7%	-1.7%	2	5.0%	0.6%	+4.4%
Dartford	17	11	64.7%	87.4%	-22.7%	5	29.4%	3.7%	+25.7%	1	5.9%	6.0%	-0.1%	0	0.0%	2.2%	-2.2%	0	0.0%	0.8%	-0.8%
Dover	13	12	92.3%	96.7%	-4.4%	1	7.7%	0.3%	+7.3%	0	0.0%	1.8%	-1.8%	0	0.0%	0.9%	-0.9%	0	0.0%	0.2%	-0.2%
Gravesham	26	16	61.5%	82.8%	-21.3%	6	23.1%	2.8%	+20.2%	3	11.5%	10.4%	+1.1%	0	0.0%	2.0%	-2.0%	1	3.8%	1.9%	+1.9%
Maidstone	57	43	75.4%	94.1%	-18.7%	7	12.3%	0.9%	+11.4%	4	7.0%	3.2%	+3.8%	1	1.8%	1.5%	+0.2%	2	3.5%	0.3%	+3.2%
Medway	62	40	64.5%	89.6%	-25.1%	11	17.7%	2.5%	+15.2%	1	1.6%	5.2%	-3.5%	5	8.1%	2.0%	+6.1%	5	8.1%	0.7%	+7.3%
Sevenoaks	19	15	78.9%	95.8%	-16.8%	1	5.3%	0.7%	+4.5%	2	10.5%	1.8%	+8.7%	0	0.0%	1.5%	-1.5%	1	5.3%	0.2%	+5.0%
Shepway	11	8	72.7%	94.7%	-21.9%	0	0.0%	0.4%	-0.4%	1	9.1%	3.4%	+5.7%	0	0.0%	1.2%	-1.2%	2	18.2%	0.3%	+17.9%
Swale	8	7	87.5%	96.6%	-9.1%	0	0.0%	1.0%	-1.0%	0	0.0%	1.1%	-1.1%	1	12.5%	1.2%	+11.3%	0	0.0%	0.2%	-0.2%
Thanet	58	53	91.4%	95.5%	-4.2%	4	6.9%	0.7%	+6.2%	0	0.0%	1.9%	-1.9%	1	1.7%	1.6%	+0.1%	0	0.0%	0.3%	-0.3%
Tonbridge and Malling	22	18	81.8%	95.9%	-14.1%	1	4.5%	0.3%	+4.2%	1	4.5%	2.0%	+2.5%	0	0.0%	1.4%	-1.4%	2	9.1%	0.3%	+8.8%
Tunbridge Wells	10	9	90.0%	94.9%	-4.9%	0	0.0%	0.6%	-0.6%	0	0.0%	2.5%	-2.5%	0	0.0%	1.6%	-1.6%	1	10.0%	0.3%	+9.7%
Total	356	272	76.4%	93.1%	-16.7%	44	12.4%	1.3%	+11.0%	16	4.5%	3.5%	+1.0%	8	2.2%	1.6%	+0.7%	16	4.5%	0.5%	+4.0%

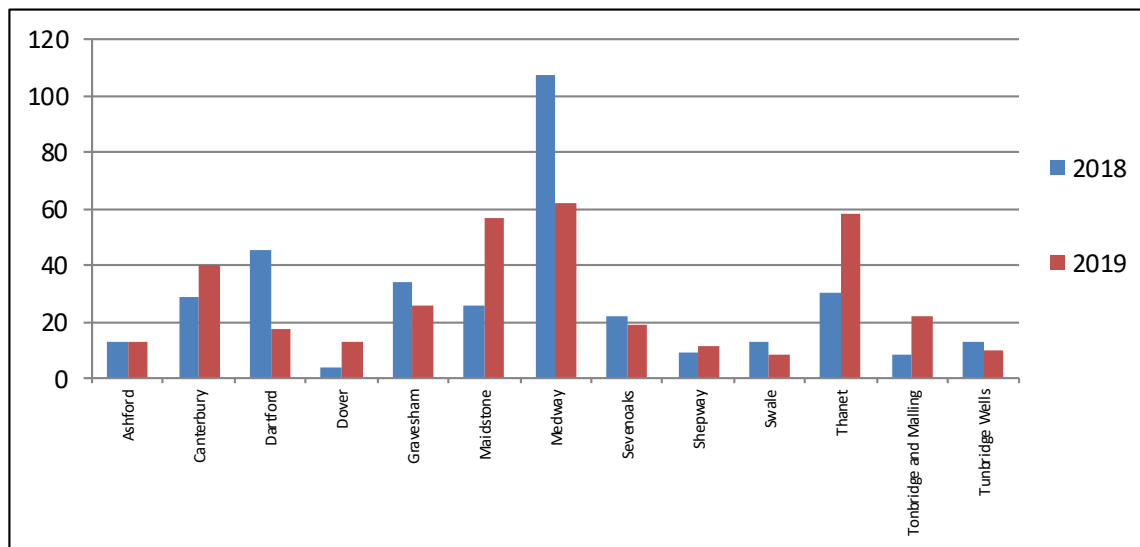
Arrests - Monthly comparison April -June 2019

District	April	May	June	Total
Ashford	5	2	6	13
Canterbury	15	15	10	40
Dartford	6	3	8	17
Dover	3	5	5	13
Gravesham	8	4	14	26
Maidstone	19	24	14	57
Medway	22	25	15	62
Sevenoaks	5	9	5	19
Shepway	3	5	3	11
Swale	4	3	1	8
Thanet	23	21	14	58
Tonbridge and Malling	7	10	5	22
Tunbridge Wells	2	1	7	10
Total	122	127	107	356



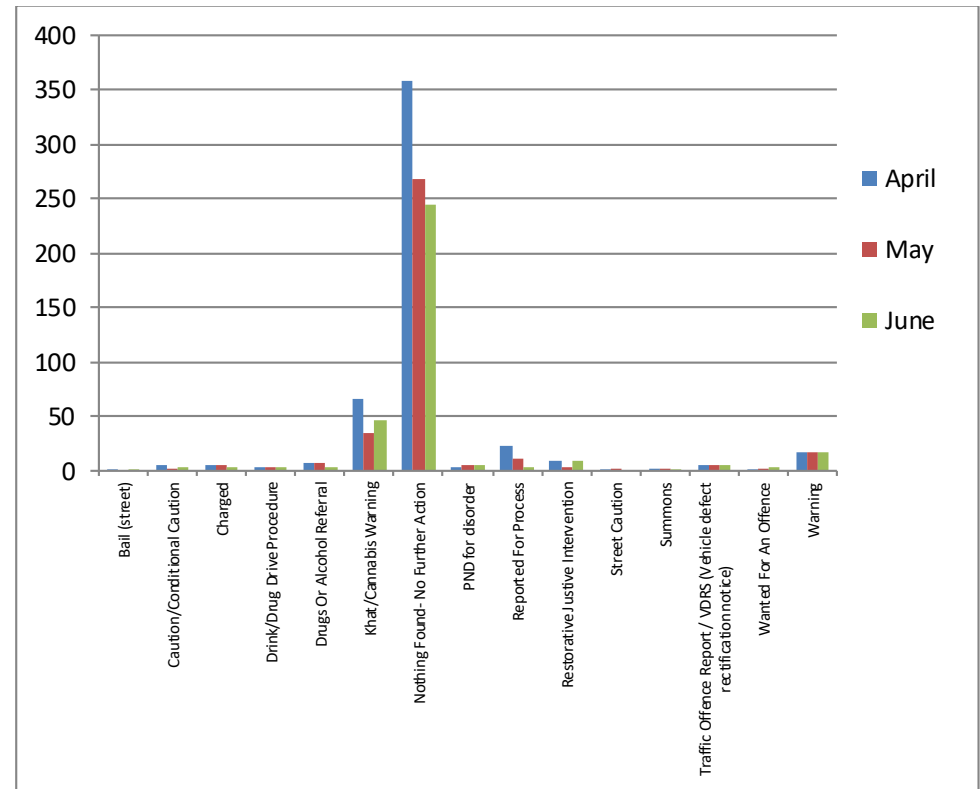
Arrests – April – June 2018 compared to April -June 2019

District	2018	2019	% Diff
Ashford	13	13	0.0%
Canterbury	29	40	+37.9%
Dartford	45	17	-62.2%
Dover	4	13	+225.0%
Gravesham	34	26	-23.5%
Maidstone	26	57	+119.2%
Medway	107	62	-42.1%
Sevenoaks	22	19	-13.6%
Shepway	9	11	+22.2%
Swale	13	8	-38.5%
Thanet	30	58	+93.3%
Tonbridge and Malling	8	22	+175.0%
Tunbridge Wells	13	10	-23.1%
Total	353	356	+0.8%



Outcomes- April - June 2019

Outcome	April	May	June	Total
Bail	2	0	2	4
Caution/Conditional Caution	5	1	4	10
Charged	5	5	3	13
Drink/Drug Drive Procedure	3	4	4	11
Drugs or Alcohol Referral	8	7	3	18
Khat/Cannabis Warning	66	35	47	148
Nothing Found- No Further Action	359	268	245	872
PND for Disorder	4	5	5	14
Reported For Process	22	12	4	38
Restorative Justice Intervention	10	3	9	22
Street Caution	2	1	0	3
Summons	1	1	2	4
Traffic Offence Report/VDRS (Vehicle Defect Rectification Notice)	6	6	5	17
Wanted For An Offence	2	1	3	6
Warning	18	18	18	54
Total	513	367	354	1234



Reason for search and Arrest Category

