

# Pace Searches and Arrest after Search

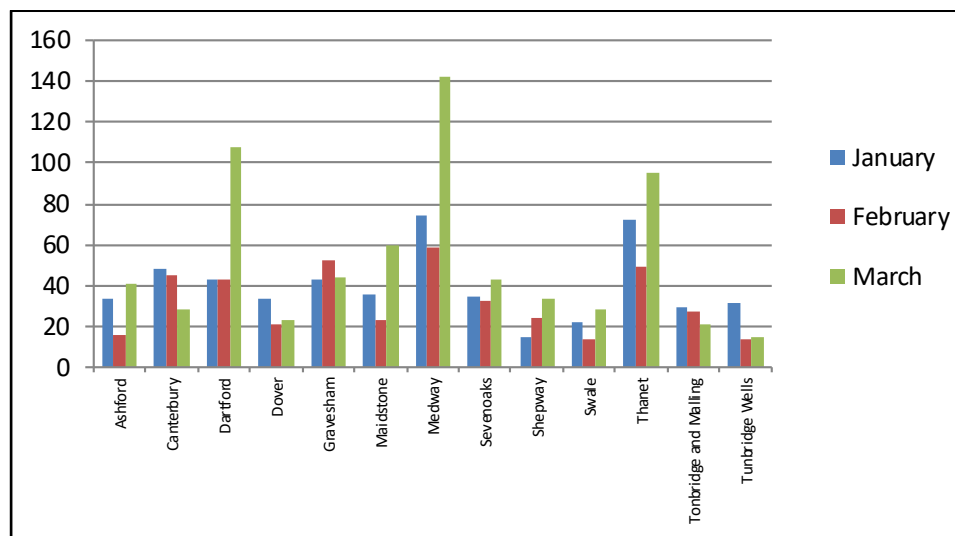
## January – March 2019

**Searches by district comparing the percentage of persons searched by ethnic code with the comparative data from the Census (2011) data**

District	Total	White				Black				Asian				Mixed				Other Ethnic group			
		No.	% of Total	Census 2011 %	% diff	No.	% of Total	Census 2011 %	% diff	No.	% of Total	Census 2011 %	% diff	No.	% of Total	Census 2011 %	% diff	No.	% of Total	Census 2011 %	% diff
Ashford	90	55	61.1%	93.7%	-32.6%	10	11.1%	1.2%	+9.9%	2	2.2%	3.4%	-1.2%	0	0.0%	1.4%	-1.4%	23	25.6%	0.3%	+25.2%
Canterbury	121	83	68.6%	93.0%	-24.4%	15	12.4%	1.3%	+11.1%	1	0.8%	3.4%	-2.6%	2	1.7%	1.7%	-0.0%	20	16.5%	0.6%	+15.9%
Dartford	194	128	66.0%	87.4%	-21.4%	18	9.3%	3.7%	+5.6%	2	1.0%	6.0%	-4.9%	7	3.6%	2.2%	+1.4%	39	20.1%	0.8%	+19.3%
Dover	77	36	46.8%	96.7%	-49.9%	4	5.2%	0.3%	+4.8%	4	5.2%	1.8%	+3.4%	0	0.0%	0.9%	-0.9%	33	42.9%	0.2%	+42.6%
Gravesham	139	57	41.0%	82.8%	-41.8%	23	16.5%	2.8%	+13.7%	8	5.8%	10.4%	-4.7%	13	9.4%	2.0%	+7.3%	38	27.3%	1.9%	+25.4%
Maidstone	119	69	58.0%	94.1%	-36.1%	11	9.2%	0.9%	+8.4%	2	1.7%	3.2%	-1.5%	5	4.2%	1.5%	+2.7%	32	26.9%	0.3%	+26.6%
Medway	275	155	56.4%	89.6%	-33.3%	25	9.1%	2.5%	+6.6%	7	2.5%	5.2%	-2.6%	14	5.1%	2.0%	+3.1%	74	26.9%	0.7%	+26.2%
Sevenoaks	110	88	80.0%	95.8%	-15.8%	7	6.4%	0.7%	+5.6%	0	0.0%	1.8%	-1.8%	0	0.0%	1.5%	-1.5%	15	13.6%	0.2%	+13.4%
Shepway	73	52	71.2%	94.7%	-23.4%	3	4.1%	0.4%	+3.7%	0	0.0%	3.4%	-3.4%	1	1.4%	1.2%	+0.2%	17	23.3%	0.3%	+23.0%
Swale	64	49	76.6%	96.6%	-20.0%	4	6.3%	1.0%	+5.2%	0	0.0%	1.1%	-1.1%	2	3.1%	1.2%	+2.0%	9	14.1%	0.2%	+13.9%
Thanet	216	178	82.4%	95.5%	-13.1%	9	4.2%	0.7%	+3.5%	0	0.0%	1.9%	-1.9%	6	2.8%	1.6%	+1.1%	23	10.6%	0.3%	+10.4%
Tonbridge and Malling	77	65	84.4%	95.9%	-11.5%	5	6.5%	0.3%	+6.1%	0	0.0%	2.0%	-2.0%	0	0.0%	1.4%	-1.4%	7	9.1%	0.3%	+8.8%
Tunbridge Wells	60	38	63.3%	94.9%	-31.6%	2	3.3%	0.6%	+2.8%	0	0.0%	2.5%	-2.5%	3	5.0%	1.6%	+3.4%	17	28.3%	0.3%	+28.0%
<b>Total</b>	<b>1615</b>	<b>1053</b>	<b>65.2%</b>	<b>93.1%</b>	<b>-27.9%</b>	<b>136</b>	<b>8.4%</b>	<b>1.3%</b>	<b>+7.1%</b>	<b>26</b>	<b>1.6%</b>	<b>3.5%</b>	<b>-1.9%</b>	<b>53</b>	<b>3.3%</b>	<b>1.6%</b>	<b>+1.7%</b>	<b>347</b>	<b>21.5%</b>	<b>0.5%</b>	<b>+21.0%</b>

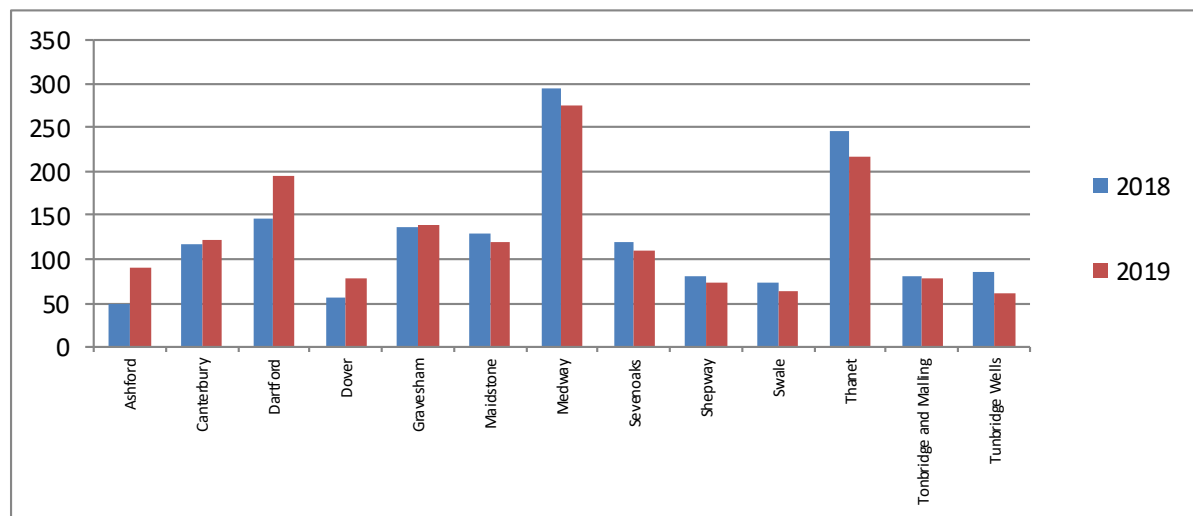
## Searches - Monthly comparison 2019

District	January	February	March	Total
Ashford	33	16	41	90
Canterbury	48	45	28	121
Dartford	43	43	108	194
Dover	33	21	23	77
Gravesham	43	52	44	139
Maidstone	36	23	60	119
Medway	74	59	142	275
Sevenoaks	35	32	43	110
Shepway	15	24	34	73
Swale	22	14	28	64
Thanet	72	49	95	216
Tonbridge and Malling	29	27	21	77
Tunbridge Wells	31	14	15	60
Total	514	419	682	1615



## Searches – January – March 2018 compared to January – March 2019

District	2018	2019	% Diff
Ashford	50	90	+80.0%
Canterbury	118	121	+2.5%
Dartford	146	194	+32.9%
Dover	56	77	+37.5%
Gravesham	137	139	+1.5%
Maidstone	130	119	-8.5%
Medway	296	275	-7.1%
Sevenoaks	119	110	-7.6%
Shepway	81	73	-9.9%
Swale	74	64	-13.5%
Thanet	245	216	-11.8%
Tonbridge and Malling	81	77	-4.9%
Tunbridge Wells	86	60	-30.2%
Total	1619	1615	-0.2%



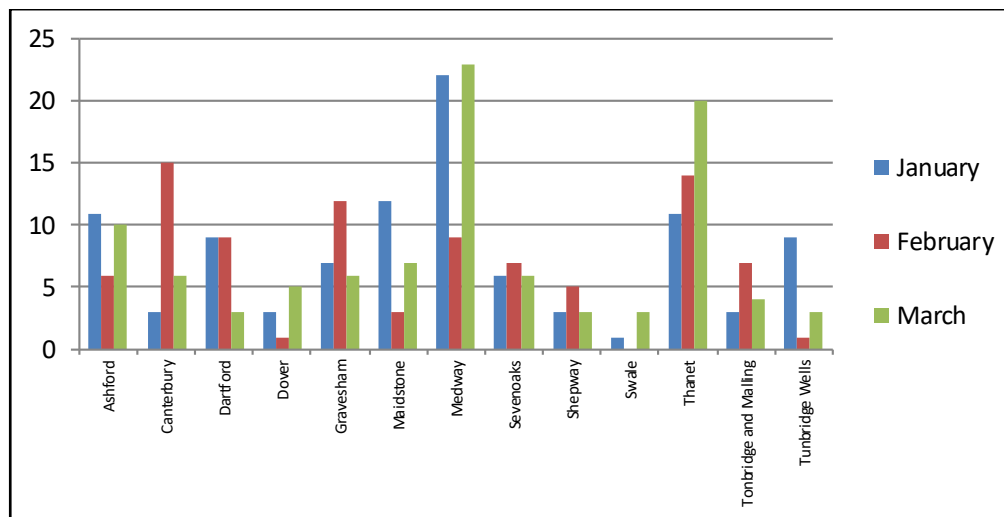
## Arrests after Search

### Arrests by district comparing the percentage of persons arrested by ethnic code with the comparative data from the Census (2011) data.

District	Total	White				Black				Asian				Mixed				Other Ethnic group			
		No.	% of Total	Census 2011 %	% diff	No.	% of Total	Census 2011 %	% diff	No.	% of Total	Census 2011 %	% diff	No.	% of Total	Census 2011 %	% diff	No.	% of Total	Census 2011 %	% diff
Ashford	27	16	59.3%	93.7%	-34.4%	3	11.1%	1.2%	+9.9%	1	3.7%	3.4%	+0.3%	0	0.0%	1.4%	-1.4%	7	25.9%	0.3%	+25.6%
Canterbury	24	15	62.5%	93.0%	-30.5%	3	12.5%	1.3%	+11.2%	0	0.0%	3.4%	-3.4%	1	4.2%	1.7%	+2.5%	5	20.8%	0.6%	+20.2%
Dartford	21	15	71.4%	87.4%	-15.9%	0	0.0%	3.7%	-3.7%	1	4.8%	6.0%	-1.2%	1	4.8%	2.2%	+2.5%	4	19.0%	0.8%	+18.3%
Dover	9	8	88.9%	96.7%	-7.8%	0	0.0%	0.3%	-0.3%	0	0.0%	1.8%	-1.8%	0	0.0%	0.9%	-0.9%	1	11.1%	0.2%	+10.9%
Gravesham	25	9	36.0%	82.8%	-46.8%	6	24.0%	2.8%	+21.2%	1	4.0%	10.4%	-6.4%	2	8.0%	2.0%	+6.0%	7	28.0%	1.9%	+26.1%
Maidstone	22	16	72.7%	94.1%	-21.4%	1	4.5%	0.9%	+3.7%	0	0.0%	3.2%	-3.2%	3	13.6%	1.5%	+12.1%	2	9.1%	0.3%	+8.8%
Medway	54	27	50.0%	89.6%	-39.6%	6	11.1%	2.5%	+8.6%	2	3.7%	5.2%	-1.5%	2	3.7%	2.0%	+1.7%	17	31.5%	0.7%	+30.8%
Sevenoaks	19	12	63.2%	95.8%	-32.6%	2	10.5%	0.7%	+9.8%	0	0.0%	1.8%	-1.8%	0	0.0%	1.5%	-1.5%	5	26.3%	0.2%	+26.1%
Shepway	11	8	72.7%	94.7%	-21.9%	1	9.1%	0.4%	+8.7%	0	0.0%	3.4%	-3.4%	0	0.0%	1.2%	-1.2%	2	18.2%	0.3%	+17.9%
Swale	4	4	100.0%	96.6%	+3.4%	0	0.0%	1.0%	-1.0%	0	0.0%	1.1%	-1.1%	0	0.0%	1.2%	-1.2%	0	0.0%	0.2%	-0.2%
Thanet	45	44	97.8%	95.5%	+2.2%	0	0.0%	0.7%	-0.7%	0	0.0%	1.9%	-1.9%	0	0.0%	1.6%	-1.6%	1	2.2%	0.3%	+1.9%
Tonbridge and Malling	14	11	78.6%	95.9%	-17.3%	0	0.0%	0.3%	-0.3%	0	0.0%	2.0%	-2.0%	0	0.0%	1.4%	-1.4%	3	21.4%	0.3%	+21.1%
Tunbridge Wells	13	7	53.8%	94.9%	-41.1%	0	0.0%	0.6%	-0.6%	0	0.0%	2.5%	-2.5%	0	0.0%	1.6%	-1.6%	6	46.2%	0.3%	+45.8%
<b>Total</b>	<b>288</b>	<b>192</b>	<b>66.7%</b>	<b>93.1%</b>	<b>-26.4%</b>	<b>22</b>	<b>7.6%</b>	<b>1.3%</b>	<b>+6.3%</b>	<b>5</b>	<b>1.7%</b>	<b>3.5%</b>	<b>-1.8%</b>	<b>9</b>	<b>3.1%</b>	<b>1.6%</b>	<b>+1.5%</b>	<b>60</b>	<b>20.8%</b>	<b>0.5%</b>	<b>+20.3%</b>

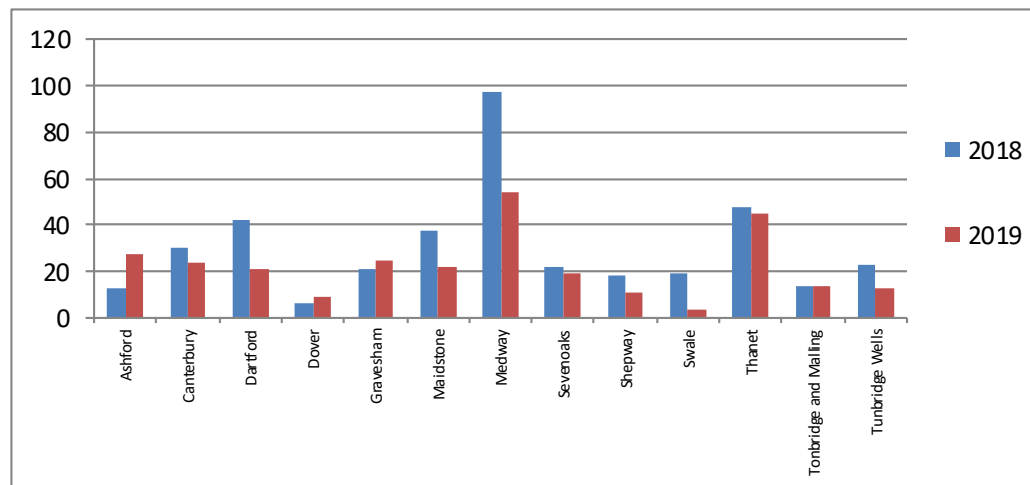
## Arrests - Monthly comparison January – March 2019

District	January	February	March	Total
Ashford	11	6	10	27
Canterbury	3	15	6	24
Dartford	9	9	3	21
Dover	3	1	5	9
Gravesham	7	12	6	25
Maidstone	12	3	7	22
Medway	22	9	23	54
Sevenoaks	6	7	6	19
Shepway	3	5	3	11
Swale	1		3	4
Thanet	11	14	20	45
Tonbridge and Malling	3	7	4	14
Tunbridge Wells	9	1	3	13
<b>Total</b>	<b>100</b>	<b>89</b>	<b>99</b>	<b>288</b>



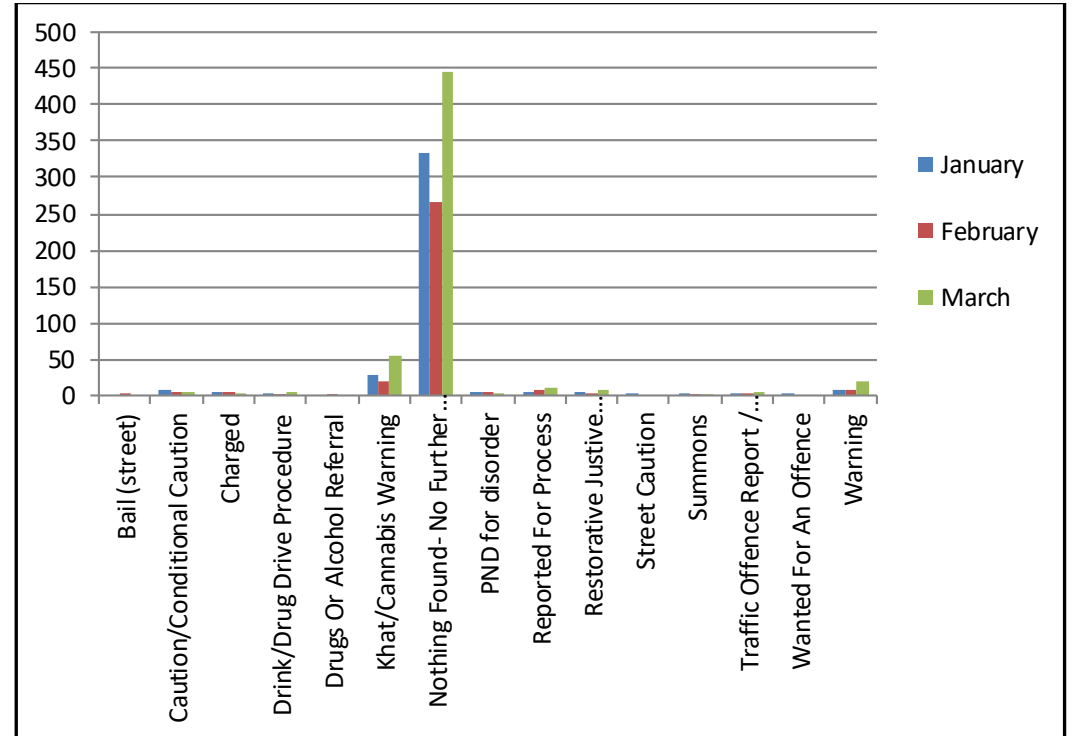
## Arrests – January – March 2018 compared to January – March 2019

District	2018	2019	% Diff
Ashford	13	27	+107.7%
Canterbury	30	24	-20.0%
Dartford	42	21	-50.0%
Dover	6	9	+50.0%
Gravesham	21	25	+19.0%
Maidstone	38	22	-42.1%
Medway	97	54	-44.3%
Sevenoaks	22	19	-13.6%
Shepway	18	11	-38.9%
Swale	19	4	-78.9%
Thanet	48	45	-6.3%
Tonbridge and Malling	14	14	0.0%
Tunbridge Wells	23	13	-43.5%
<b>Total</b>	<b>391</b>	<b>288</b>	<b>-26.3%</b>



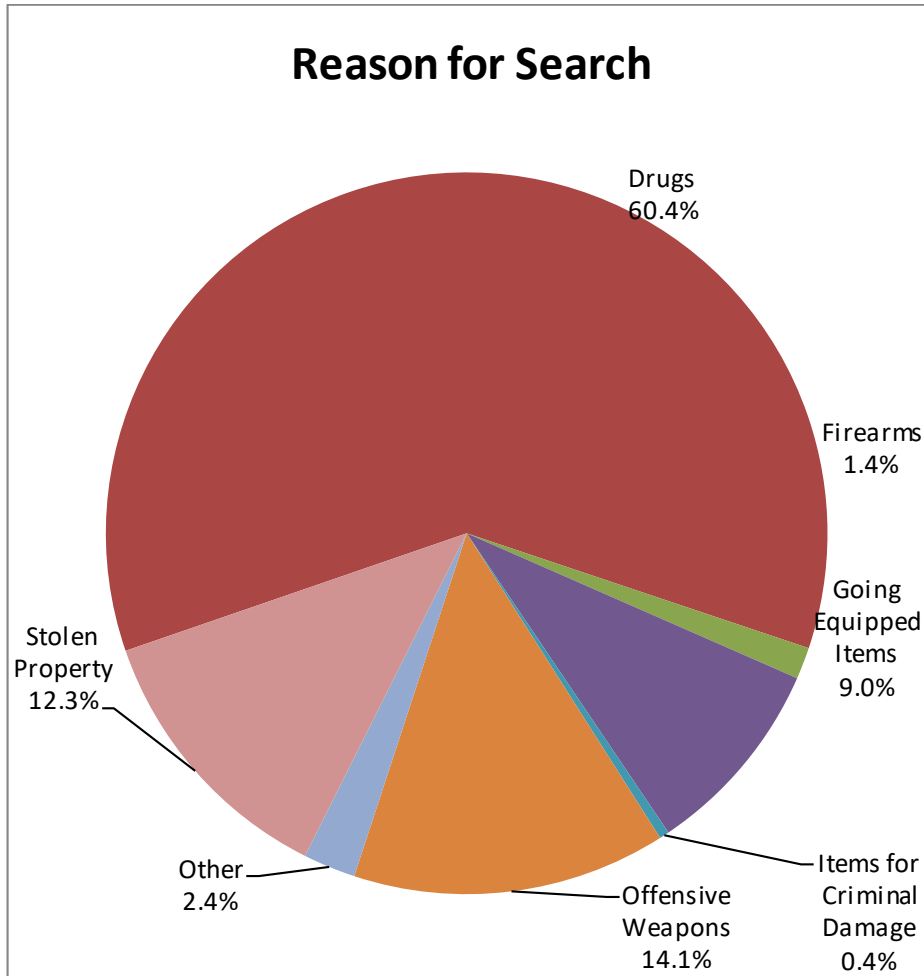
## Outcomes- Monthly comparison January – March 2019

Outcome	January	February	March	Total
Bail	0	2	0	2
Caution/Conditional Caution	7	4	6	17
Charged	4	5	1	10
Drink/Drug Drive Procedure	2	3	4	9
Drugs or Alcohol Referral	0	3	0	3
Khat/Cannabis Warning	29	18	54	101
Nothing Found- No Further Action	334	266	446	1046
PND for Disorder	5	4	2	11
Reported For Process	5	8	10	23
Restorative Justice Intervention	5	1	7	13
Street Caution	1	0	0	1
Summons	1	3	3	7
Traffic Offence Report/VDRS (Vehicle Defect Rectification Notice)	1	2	6	9
Wanted For An Offence	1	0	0	1
Warning	8	8	19	35
<b>Total</b>	<b>403</b>	<b>327</b>	<b>558</b>	<b>1288</b>



## Reason for search and Arrest Category

### Reason for Search



### Reason for Arrest

